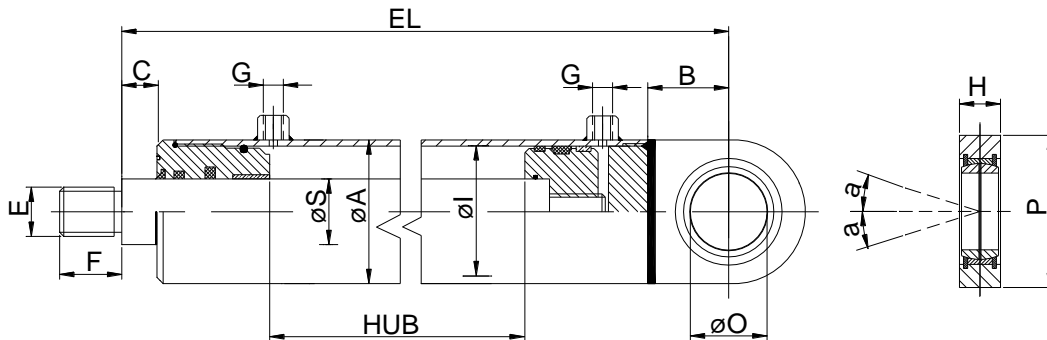


Zylinder mit Gelenkauge

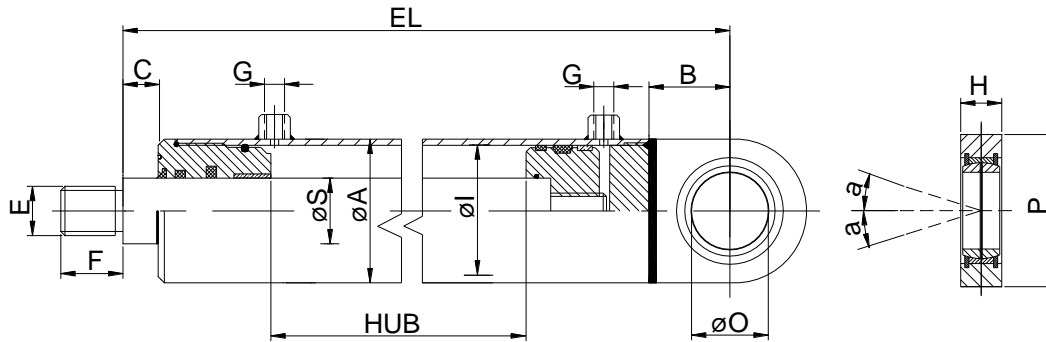
- Betriebsdruck max. 200 bar
- Kolbengeschwindigkeit max. 25 m/min.
- Temperatur -25 - +80C°



Artikel	Bezeichnung	ø I	ø S	Hub	EL	C	F	E	ø D	L	P	a	ø A	G
710600	40 x 20 x 100	40	20	100	246	22	25	16x1.5	20	19	50	9	50	1/4"
710601	40 x 20 x 150	40	20	150	296	22	25	16x1.5	20	19	50	9	50	1/4"
710602	40 x 20 x 200	40	20	200	346	22	25	16x1.5	20	19	50	9	50	1/4"
710603	40 x 20 x 250	40	20	250	396	22	25	16x1.5	20	19	50	9	50	1/4"
710604	40 x 20 x 300	40	20	300	446	22	25	16x1.5	20	19	50	9	50	1/4"
710605	40 x 20 x 350	40	20	350	496	22	25	16x1.5	20	19	50	9	50	1/4"
710606	40 x 20 x 400	40	20	400	546	22	25	16x1.5	20	19	50	9	50	1/4"
710607	40 x 20 x 450	40	20	450	596	22	25	16x1.5	20	19	50	9	50	1/4"
710608	40 x 20 x 500	40	20	500	646	22	25	16x1.5	20	19	50	9	50	1/4"
710609	40 x 25 x 150	40	25	150	296	22	25	16x1.5	20	19	50	9	50	1/4"
710610	40 x 25 x 200	40	25	200	346	22	25	16x1.5	20	19	50	9	50	1/4"
710611	40 x 25 x 250	40	25	250	396	22	25	16x1.5	20	19	50	9	50	1/4"
710612	40 x 25 x 300	40	25	300	446	22	25	16x1.5	20	19	50	9	50	1/4"
710613	40 x 25 x 350	40	25	350	496	22	25	16x1.5	20	19	50	9	50	1/4"
710614	40 x 25 x 400	40	25	400	546	22	25	16x1.5	20	19	50	9	50	1/4"
710615	40 x 25 x 450	40	25	450	596	22	25	16x1.5	20	19	50	9	50	1/4"
710616	40 x 25 x 500	40	25	500	646	22	25	16x1.5	20	19	50	9	50	1/4"
710617	40 x 25 x 550	40	25	550	696	22	25	16x1.5	20	19	50	9	50	1/4"
710618	40 x 25 x 600	40	25	600	746	22	25	16x1.5	20	19	50	9	50	1/4"
710619	50 x 25 x 100	50	25	100	240	22	30	16x1.5	25	23	55	7	60	3/8"
710620	50 x 25 x 150	50	25	150	310	22	30	16x1.5	25	23	55	7	60	3/8"
710621	50 x 25 x 200	50	25	200	360	22	30	16x1.5	25	23	55	7	60	3/8"
710622	50 x 25 x 250	50	25	250	410	22	30	16x1.5	25	23	55	7	60	3/8"
710623	50 x 25 x 300	50	25	300	460	22	30	16x1.5	25	23	55	7	60	3/8"
710624	50 x 25 x 350	50	25	350	510	22	30	16x1.5	25	23	55	7	60	3/8"
710625	50 x 25 x 400	50	25	400	560	22	30	16x1.5	25	23	55	7	60	3/8"
710626	50 x 25 x 450	50	25	450	610	22	30	16x1.5	25	23	55	7	60	3/8"
710627	50 x 25 x 500	50	25	500	660	22	30	16x1.5	25	23	55	7	60	3/8"
710628	50 x 25 x 550	50	25	550	710	22	30	16x1.5	25	23	55	7	60	3/8"
710629	50 x 25 x 600	50	25	600	760	22	30	16x1.5	25	23	55	7	60	3/8"
710630	50 x 25 x 800	50	25	800	960	22	30	16x1.5	25	23	55	7	60	3/8"
710631	50 x 25x1000	50	25	1000	1160	22	30	16x1.5	25	23	55	7	60	3/8"

Zylinder mit Gelenkauge

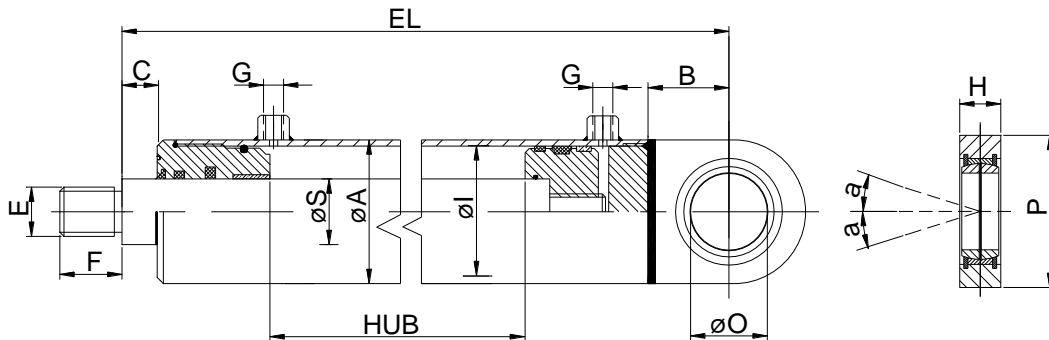
- Betriebsdruck max. 200 bar
- Kolbengeschwindigkeit max. 25 m/min.
- Temperatur -25 - +80C°



Artikel	Bezeichnung	ø I	ø S	Hub	EL	C	F	E	ø D	L	P	a	ø A	G
710632	50 x 30 x 150	50	30	150	310	22	30	16x1.5	25	23	55	7	60	3/8"
710633	50 x 30 x 200	50	30	200	360	22	30	16x1.5	25	23	55	7	60	3/8"
710634	50 x 30 x 250	50	30	250	410	22	30	16x1.5	25	23	55	7	60	3/8"
710635	50 x 30 x 300	50	30	300	460	22	30	16x1.5	25	23	55	7	60	3/8"
710636	50 x 30 x 350	50	30	350	510	22	30	16x1.5	25	23	55	7	60	3/8"
710637	50 x 30 x 400	50	30	400	460	22	30	16x1.5	25	23	55	7	60	3/8"
710638	50 x 30 x 450	50	30	450	610	22	30	16x1.5	25	23	55	7	60	3/8"
710639	50 x 30 x 500	50	30	500	660	22	30	16x1.5	25	23	55	7	60	3/8"
710640	50 x 30 x 550	50	30	550	710	22	30	16x1.5	25	23	55	7	60	3/8"
710641	50 x 30 x 600	50	30	600	760	22	30	16x1.5	25	23	55	7	60	3/8"
710642	50 x 30 x 800	50	30	800	960	22	30	16x1.5	25	23	55	7	60	3/8"
710643	50 x 30x1000	50	30	1000	1160	22	30	16x1.5	25	23	55	7	60	3/8"
710644	60 x 30 x 100	60	30	100	282	23	35	22x1.5	30	28	65	6	70	3/8"
710645	60 x 30 x 150	60	30	150	332	23	35	22x1.5	30	28	65	6	70	3/8"
710646	60 x 30 x 200	60	30	200	382	23	35	22x1.5	30	28	65	6	70	3/8"
710647	60 x 30 x 250	60	30	250	432	23	35	22x1.5	30	28	65	6	70	3/8"
710648	60 x 30 x 300	60	30	300	482	23	35	22x1.5	30	28	65	6	70	3/8"
710649	60 x 30 x 350	60	30	350	532	23	35	22x1.5	30	28	65	6	70	3/8"
710650	60 x 30 x 400	60	30	400	582	23	35	22x1.5	30	28	65	6	70	3/8"
710651	60 x 30 x 450	60	30	450	632	23	35	22x1.5	30	28	65	6	70	3/8"
710652	60 x 30 x 500	60	30	500	682	23	35	22x1.5	30	28	65	6	70	3/8"
710653	60 x 30 x 550	60	30	550	732	23	35	22x1.5	30	28	65	6	70	3/8"
710654	60 x 30 x 600	60	30	600	782	23	35	22x1.5	30	28	65	6	70	3/8"
710655	60 x 30 x 800	60	30	800	982	23	35	22x1.5	30	28	65	6	70	3/8"
710656	60 x 30x1000	60	30	1000	1182	23	35	22x1.5	30	28	65	6	70	3/8"
710657	60 x 35 x 100	60	35	100	282	23	35	22x1.5	30	28	65	6	70	3/8"
710658	60 x 35 x 150	60	35	150	332	23	35	22x1.5	30	28	65	6	70	3/8"
710659	60 x 35 x 200	60	35	200	382	23	35	22x1.5	30	28	65	6	70	3/8"
710660	60 x 35 x 250	60	35	250	432	23	35	22x1.5	30	28	65	6	70	3/8"
710661	60 x 35 x 300	60	35	300	482	23	35	22x1.5	30	28	65	6	70	3/8"
710662	60 x 35 x 350	60	35	350	532	23	35	22x1.5	30	28	65	6	70	3/8"
710663	60 x 35 x 400	60	35	400	582	23	35	22x1.5	30	28	65	6	70	3/8"
710664	60 x 35 x 450	60	35	450	632	23	35	22x1.5	30	28	65	6	70	3/8"
710665	60 x 35 x 500	60	35	500	682	23	35	22x1.5	30	28	65	6	70	3/8"
710666	60 x 35 x 550	60	35	550	732	23	35	22x1.5	30	28	65	6	70	3/8"
710667	60 x 35 x 600	60	35	600	782	23	35	22x1.5	30	28	65	6	70	3/8"
710668	60 x 35 x 800	60	35	800	982	23	35	22x1.5	30	28	65	6	70	3/8"
710669	60 x 35x1000	60	35	1000	1182	23	35	22x1.5	30	28	65	6	70	3/8"

Zylinder mit Gelenkauge

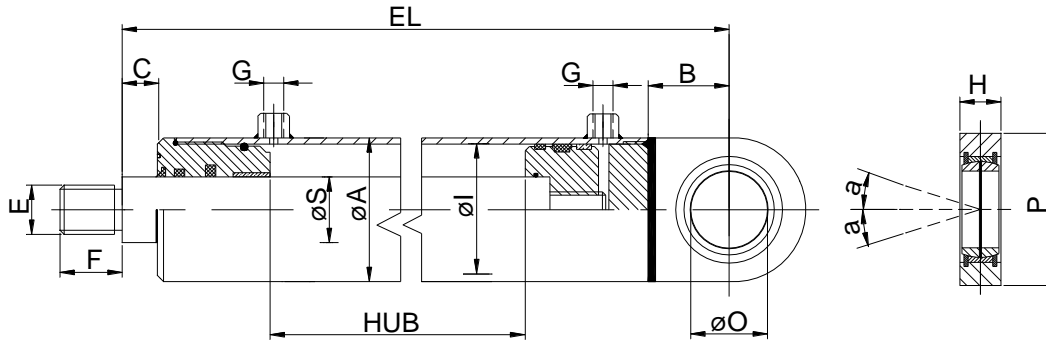
- Betriebsdruck max. 200 bar
- Kolbengeschwindigkeit max. 25 m/min.
- Temperatur -25 - +80C°



Artikel	Bezeichnung	ø I	ø S	Hub	EL	C	F	E	ø D	L	P	a	ø A	G
710670	60 x 40 x 200	60	40	200	382	23	35	22x1.5	30	28	65	6	70	3/8"
710671	60 x 40 x 250	60	40	250	432	23	35	22x1.5	30	28	65	6	70	3/8"
710672	60 x 40 x 300	60	40	300	482	23	35	22x1.5	30	28	65	6	70	3/8"
710673	60 x 40 x 350	60	40	350	532	23	35	22x1.5	30	28	65	6	70	3/8"
710674	60 x 40 x 400	60	40	400	582	23	35	22x1.5	30	28	65	6	70	3/8"
710675	60 x 40 x 450	60	40	450	632	23	35	22x1.5	30	28	65	6	70	3/8"
710676	60 x 40 x 500	60	40	500	682	23	35	22x1.5	30	28	65	6	70	3/8"
710677	60 x 40 x 550	60	40	550	732	23	35	22x1.5	30	28	65	6	70	3/8"
710678	60 x 40 x 600	60	40	600	782	23	35	22x1.5	30	28	65	6	70	3/8"
710679	60 x 40 x 800	60	40	800	982	23	35	22x1.5	30	28	65	6	70	3/8"
710680	60 x 40x1000	60	40	1000	1182	23	35	22x1.5	30	28	65	6	70	3/8"
710681	70 x 35 x 100	70	35	100	285	23	35	28x1.5	35	30	83	6	80	3/8"
710682	70 x 35 x 150	70	35	150	325	23	35	28x1.5	35	30	83	6	80	3/8"
710683	70 x 35 x 200	70	35	200	385	23	35	28x1.5	35	30	83	6	80	3/8"
710684	70 x 35 x 250	70	35	250	435	23	35	28x1.5	35	30	83	6	80	3/8"
710685	70 x 35 x 300	70	35	300	485	23	35	28x1.5	35	30	83	6	80	3/8"
710686	70 x 35 x 350	70	35	350	535	23	35	28x1.5	35	30	83	6	80	3/8"
710687	70 x 35 x 400	70	35	400	585	23	35	28x1.5	35	30	83	6	80	3/8"
710688	70 x 35 x 450	70	35	450	635	23	35	28x1.5	35	30	83	6	80	3/8"
710689	70 x 35 x 500	70	35	500	685	23	35	28x1.5	35	30	83	6	80	3/8"
710690	70 x 35 x 550	70	35	550	735	23	35	28x1.5	35	30	83	6	80	3/8"
710691	70 x 35 x 600	70	35	600	785	23	35	28x1.5	35	30	83	6	80	3/8"
710692	70 x 35 x 800	70	35	800	985	23	35	28x1.5	35	30	83	6	80	3/8"
710693	70 x 35x1000	70	35	1000	1185	23	35	28x1.5	35	30	83	6	80	3/8"
710694	70 x 40 x 200	70	40	200	385	23	35	28x1.5	35	30	83	6	80	3/8"
710695	70 x 40 x 250	70	40	250	435	23	35	28x1.5	35	30	83	6	80	3/8"
710696	70 x 40 x 300	70	40	300	485	23	35	28x1.5	35	30	83	6	80	3/8"
710697	70 x 40 x 350	70	40	350	535	23	35	28x1.5	35	30	83	6	80	3/8"
710698	70 x 40 x 400	70	40	400	585	23	35	28x1.5	35	30	83	6	80	3/8"
710699	70 x 40 x 450	70	40	450	635	23	35	28x1.5	35	30	83	6	80	3/8"
710700	70 x 40 x 500	70	40	500	685	23	35	28x1.5	35	30	83	6	80	3/8"
710701	70 x 40 x 550	70	40	550	735	23	35	28x1.5	35	30	83	6	80	3/8"
710702	70 x 40 x 600	70	40	600	785	23	35	28x1.5	35	30	83	6	80	3/8"
710703	70 x 40 x 800	70	40	800	985	23	35	28x1.5	35	30	83	6	80	3/8"
710704	70 x 40x1000	70	40	1000	1185	23	35	28x1.5	35	30	83	6	80	3/8"

Zylinder mit Gelenkauge

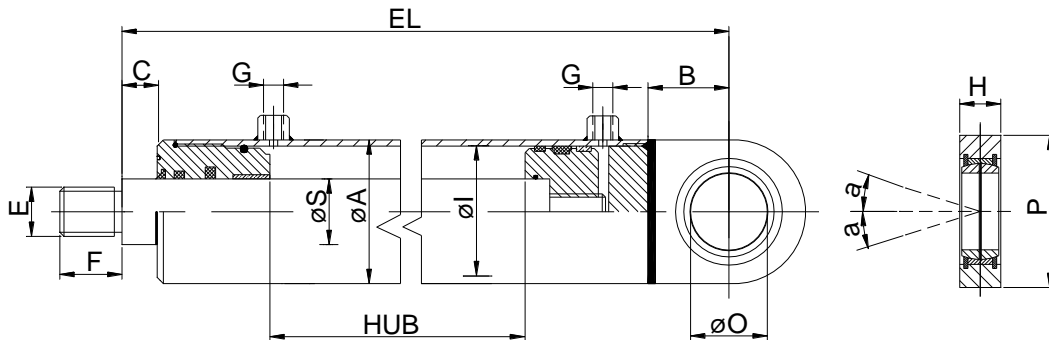
- Betriebsdruck max. 200 bar
- Kolbengeschwindigkeit max. 25 m/min.
- Temperatur -25 - +80C°



Artikel	Bezeichnung	ø I	ø S	Hub	EL	C	F	E	ø D	L	P	a	ø A	G
710705	80 x 40 x 200	80	40	200	408	25	40	35x1.5	40	35	100	7	92	1/2"
710706	80 x 40 x 250	80	40	250	458	25	40	35x1.5	40	35	100	7	92	1/2"
710707	80 x 40 x 300	80	40	300	508	25	40	35x1.5	40	35	100	7	92	1/2"
710708	80 x 40 x 400	80	40	400	608	25	40	35x1.5	40	35	100	7	92	1/2"
710709	80 x 40 x 500	80	40	500	708	25	40	35x1.5	40	35	100	7	92	1/2"
710710	80 x 40 x 600	80	40	600	808	25	40	35x1.5	40	35	100	7	92	1/2"
710711	80 x 40 x 800	80	40	800	1008	25	40	35x1.5	40	35	100	7	92	1/2"
710712	80 x 40x1000	80	40	1000	1208	25	40	35x1.5	40	35	100	7	92	1/2"
710713	80 x 50 x 200	80	50	200	408	25	40	35x1.5	40	35	100	7	92	1/2"
710714	80 x 50 x 250	80	50	250	458	25	40	35x1.5	40	35	100	7	92	1/2"
710715	80 x 50 x 300	80	50	300	508	25	40	35x1.5	40	35	100	7	92	1/2"
710716	80 x 50 x 400	80	50	400	608	25	40	35x1.5	40	35	100	7	92	1/2"
710717	80 x 50 x 500	80	50	500	708	25	40	35x1.5	40	35	100	7	92	1/2"
710718	80 x 50 x 600	80	50	600	808	25	40	35x1.5	40	35	100	7	92	1/2"
710719	80 x 50 x 800	80	50	800	1008	25	40	35x1.5	40	35	100	7	92	1/2"
710720	80 x 50x1000	80	50	1000	1208	25	40	35x1.5	40	35	100	7	92	1/2"
710721	100 x 50 x 200	100	50	200	445	25	45	45x1.5	50	40	123	6	115	1/2"
710722	100 x 50 x 250	100	50	250	495	25	45	45x1.5	50	40	123	6	115	1/2"
710723	100 x 50 x 300	100	50	300	545	25	45	45x1.5	50	40	123	6	115	1/2"
710724	100 x 50 x 400	100	50	400	645	25	45	45x1.5	50	40	123	6	115	1/2"
710725	100 x 50 x 500	100	50	500	745	25	45	45x1.5	50	40	123	6	115	1/2"
710726	100 x 50 x 600	100	50	600	845	25	45	45x1.5	50	40	123	6	115	1/2"
710727	100 x 50 x 800	100	50	800	1045	25	45	45x1.5	50	40	123	6	115	1/2"
710728	100 x 50x1000	100	50	1000	1245	25	45	45x1.5	50	40	123	6	115	1/2"
710729	100 x 60 x 300	100	60	300	545	25	45	45x1.5	50	40	123	6	115	1/2"
710730	100 x 60 x 400	100	60	400	645	25	45	45x1.5	50	40	123	6	115	1/2"
710731	100 x 60 x 500	100	60	500	745	25	45	45x1.5	50	40	123	6	115	1/2"
710732	100 x 60 x 600	100	60	600	845	25	45	45x1.5	50	40	123	6	115	1/2"
710733	100 x 60 x 800	100	60	800	1045	25	45	45x1.5	50	40	123	6	115	1/2"
710734	100 x 60x1000	100	60	1000	1245	25	45	45x1.5	50	40	123	6	115	1/2"

Zylinder mit Gelenkauge

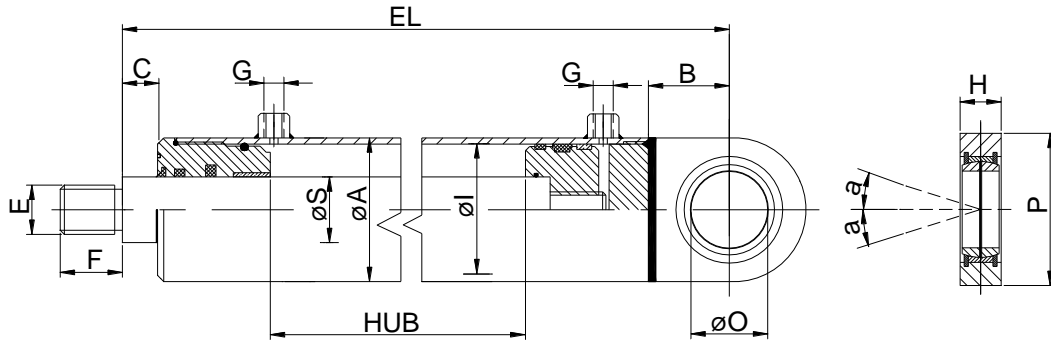
- Betriebsdruck max. 200 bar
- Kolbengeschwindigkeit max. 25 m/min.
- Temperatur -25 - +80C°



Artikel	Bezeichnung	ø I	ø S	Hub	EL	C	F	E	ø D	L	P	a	ø A	G
710735	125 x 60 x 200	125	60	200	477	30	59	58x1.5	60	50	140	6	145	1/2"
710736	125 x 60 x 300	125	60	300	577	30	59	58x1.5	60	50	140	6	145	1/2"
710737	125 x 60 x 400	125	60	400	677	30	59	58x1.5	60	50	140	6	145	1/2"
710738	125 x 60 x 500	125	60	500	777	30	59	58x1.5	60	50	140	6	145	1/2"
710739	125 x 60 x 600	125	60	600	877	30	59	58x1.5	60	50	140	6	145	1/2"
710740	125 x 60 x 700	125	60	700	977	30	59	58x1.5	60	50	140	6	145	1/2"
710741	125 x 60 x 800	125	60	800	1077	30	59	58x1.5	60	50	140	6	145	1/2"
710742	125 x 60 x 900	125	60	900	1177	30	59	58x1.5	60	50	140	6	145	1/2"
710743	125 x 60x1000	125	60	1000	1277	30	59	58x1.5	60	50	140	6	145	1/2"
710744	125 x 70 x 200	125	70	200	477	30	59	58x1.5	60	50	140	6	145	1/2"
710745	125 x 70 x 300	125	70	300	577	30	59	58x1.5	60	50	140	6	145	1/2"
710746	125 x 70 x 400	125	70	400	677	30	59	58x1.5	60	50	140	6	145	1/2"
710747	125 x 70 x 500	125	70	500	777	30	59	58x1.5	60	50	140	6	145	1/2"
710748	125 x 70 x 600	125	70	600	877	30	59	58x1.5	60	50	140	6	145	1/2"
710749	125 x 70 x 700	125	70	700	977	30	59	58x1.5	60	50	140	6	145	1/2"
710750	125 x 70 x 800	125	70	800	1077	30	59	58x1.5	60	50	140	6	145	1/2"
710751	125 x 70 x 900	125	70	900	1177	30	59	58x1.5	60	50	140	6	145	1/2"
710752	125 x 70x1000	125	70	1000	1277	30	59	58x1.5	60	50	140	6	145	1/2"
710753	140 x 70 x 200	140	70	200	490	30	66	65x1.5	70	55	164	6	160	1/2"
710754	140 x 70 x 300	140	70	300	590	30	66	65x1.5	70	55	164	6	160	1/2"
710755	140 x 70 x 400	140	70	400	690	30	66	65x1.5	70	55	164	6	160	1/2"
710756	140 x 70 x 500	140	70	500	790	30	66	65x1.5	70	55	164	6	160	1/2"
710757	140 x 70 x 600	140	70	600	890	30	66	65x1.5	70	55	164	6	160	1/2"
710758	140 x 70 x 700	140	70	700	990	30	66	65x1.5	70	55	164	6	160	1/2"
710759	140 x 70 x 800	140	70	800	1090	30	66	65x1.5	70	55	164	6	160	1/2"
710760	140 x 70 x 900	140	70	900	1190	30	66	65x1.5	70	55	164	6	160	1/2"
710761	140 x 70x1000	140	70	1000	1290	30	66	65x1.5	70	55	164	6	160	1/2"

Zylinder mit Gelenkauge

- Betriebsdruck max. 200 bar
- Kolbengeschwindigkeit max. 25 m/min.
- Temperatur -25 - +80C°



Artikel	Bezeichnung	ø I	ø S	Hub	EL	C	F	E	ø D	L	P	a	ø A	G
710762	140 x 80 x 200	140	80	200	490	30	66	65x1.5	70	55	164	6	160	1/2"
710763	140 x 80 x 300	140	80	300	590	30	66	65x1.5	70	55	164	6	160	1/2"
710764	140 x 80 x 400	140	80	400	690	30	66	65x1.5	70	55	164	6	160	1/2"
710765	140 x 80 x 500	140	80	500	790	30	66	65x1.5	70	55	164	6	160	1/2"
710766	140 x 80 x 600	140	80	600	890	30	66	65x1.5	70	55	164	6	160	1/2"
710767	140 x 80 x 700	140	80	700	990	30	66	65x1.5	70	55	164	6	160	1/2"
710768	140 x 80 x 800	140	80	800	1090	30	66	65x1.5	70	55	164	6	160	1/2"
710769	140 x 80 x 900	140	80	900	1190	30	66	65x1.5	70	55	164	6	160	1/2"
710770	140 x 80x1000	140	80	1000	1290	30	66	65x1.5	70	55	164	6	160	1/2"
710771	160 x 80 x 200	160	80	200	518	30	80	80x2	80	60	180	6	180	1/2"
710772	160 x 80 x 300	160	80	300	618	30	80	80x2	80	60	180	6	180	1/2"
710773	160 x 80 x 400	160	80	400	718	30	80	80x2	80	60	180	6	180	1/2"
710774	160 x 80 x 500	160	80	500	818	30	80	80x2	80	60	180	6	180	1/2"
710775	160 x 80 x 600	160	80	600	918	30	80	80x2	80	60	180	6	180	1/2"
710776	160 x 80 x 700	160	80	700	1018	30	80	80x2	80	60	180	6	180	1/2"
710777	160 x 80 x 800	160	80	800	1118	30	80	80x2	80	60	180	6	180	1/2"
710778	160 x 80 x 900	160	80	900	1218	30	80	80x2	80	60	180	6	180	1/2"
710779	160 x 80x1000	160	80	1000	1318	30	80	80x2	80	60	180	6	180	1/2"
710780	160 x 90 x 200	160	90	200	518	30	100	80x2	80	60	180	6	180	1/2"
710781	160 x 90 x 300	160	90	300	618	30	100	80x2	80	60	180	6	180	1/2"
710782	160 x 90 x 400	160	90	400	718	30	100	80x2	80	60	180	6	180	1/2"
710783	160 x 90 x 500	160	90	500	818	30	100	80x2	80	60	180	6	180	1/2"
710784	160 x 90 x 600	160	90	600	918	30	100	80x2	80	60	180	6	180	1/2"
710785	160 x 90 x 700	160	90	700	1018	30	100	80x2	80	60	180	6	180	1/2"
710786	160 x 90 x 800	160	90	800	1118	30	100	80x2	80	60	180	6	180	1/2"
710787	160 x 90 x 900	160	90	900	1218	30	100	80x2	80	60	180	6	180	1/2"
710788	160 x 90x1000	160	90	1000	1318	30	100	80x2	80	60	180	6	180	1/2"