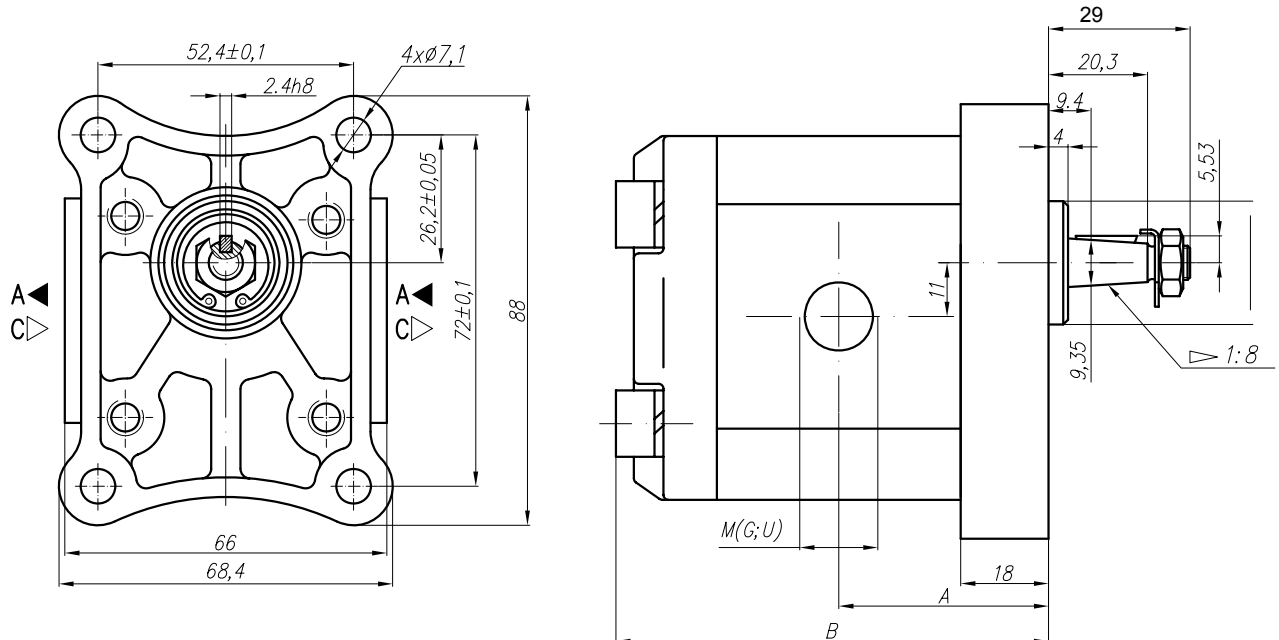


# Hydraulische Zahnradpumpen

## Gr.1 Betriebsdruck 250 bar

Drehrichtung C : Uhrzeigersinn

Drehrichtung A : Gegenuhrzeigersinn



| Artikel | Bezeichnung   | cm3  | A    | B     | Saugseite        |       |         |       | Druckseite        |   |         |       |
|---------|---------------|------|------|-------|------------------|-------|---------|-------|-------------------|---|---------|-------|
|         |               |      |      |       | u                | d     | M       | G     | E                 | d | M       | G     |
| 420000  | 10C 1 X053    | 1    | 39.1 | 81.0  | 3/4" - 16 UNF 2B |       | M16x1.5 | G3/8" | 9/16" - 18 UNF 2B |   | M16x1.5 | G3/8" |
| 420100  | 10C 1.25 X053 | 1.25 | 39.5 | 82.0  |                  |       | M16x1.5 | G3/8" |                   |   | M16x1.5 | G3/8" |
| 420200  | 10C 1.6 X053  | 1.6  | 40.3 | 83.6  |                  |       | M16x1.5 | G3/8" |                   |   | M16x1.5 | G3/8" |
| 420300  | 10C 2 X053    | 2    | 41.1 | 85.2  |                  |       | M16x1.5 | G3/8" |                   |   | M16x1.5 | G3/8" |
| 420400  | 10C 2.5 X053  | 2.5  | 42.1 | 84.2  |                  |       | M16x1.5 | G3/8" |                   |   | M16x1.5 | G3/8" |
| 420500  | 10C 3.15 X053 | 3.15 | 43.5 | 89.8  |                  |       | M20x1.5 | G1/2" |                   |   | M16x1.5 | G3/8" |
| 420600  | 10C 3.65 X053 | 3.65 | 44.4 | 91.9  |                  |       | M20x1.5 | G1/2" |                   |   | M16x1.5 | G3/8" |
| 420700  | 10C 4.2 X053  | 4.2  | 45.5 | 94.1  |                  |       | M20x1.5 | G1/2" |                   |   | M16x1.5 | G3/8" |
| 420800  | 10C 5 X053    | 5    | 47.1 | 97.2  |                  |       | M20x1.5 | G1/2" |                   |   | M16x1.5 | G3/8" |
| 420900  | 10C 5.7 X053  | 5.7  | 48.5 | 100.1 |                  |       | M20x1.5 | G1/2" |                   |   | M16x1.5 | G3/8" |
| 421000  | 10C 6.1 X053  | 6.1  | 49.4 | 101.8 | M20x1.5          | G1/2" | M16x1.5 | G3/8" |                   |   |         |       |

| Artikel | Bezeichnung   | cm3  | A    | B     | Saugseite        |       |         |       | Druckseite        |   |         |       |
|---------|---------------|------|------|-------|------------------|-------|---------|-------|-------------------|---|---------|-------|
|         |               |      |      |       | u                | d     | M       | G     | E                 | d | M       | G     |
| 422000  | 10A 1 X053    | 1    | 39.1 | 81.0  | 3/4" - 16 UNF 2B |       | M16x1.5 | G3/8" | 9/16" - 18 UNF 2B |   | M16x1.5 | G3/8" |
| 422100  | 10A 1.25 X053 | 1.25 | 39.5 | 82.0  |                  |       | M16x1.5 | G3/8" |                   |   | M16x1.5 | G3/8" |
| 422200  | 10A 1.6 X053  | 1.6  | 40.3 | 83.6  |                  |       | M16x1.5 | G3/8" |                   |   | M16x1.5 | G3/8" |
| 422300  | 10A 2 X053    | 2    | 41.1 | 85.2  |                  |       | M16x1.5 | G3/8" |                   |   | M16x1.5 | G3/8" |
| 422400  | 10A 2.5 X053  | 2.5  | 42.1 | 84.2  |                  |       | M16x1.5 | G3/8" |                   |   | M16x1.5 | G3/8" |
| 422500  | 10A 3.15 X053 | 3.15 | 43.5 | 89.8  |                  |       | M20x1.5 | G1/2" |                   |   | M16x1.5 | G3/8" |
| 422600  | 10A 3.65 X053 | 3.65 | 44.4 | 91.9  |                  |       | M20x1.5 | G1/2" |                   |   | M16x1.5 | G3/8" |
| 422700  | 10A 4.2 X053  | 4.2  | 45.5 | 94.1  |                  |       | M20x1.5 | G1/2" |                   |   | M16x1.5 | G3/8" |
| 422800  | 10A 5 X053    | 5    | 47.1 | 97.2  |                  |       | M20x1.5 | G1/2" |                   |   | M16x1.5 | G3/8" |
| 422900  | 10A 5.7 X053  | 5.7  | 48.5 | 100.1 |                  |       | M20x1.5 | G1/2" |                   |   | M16x1.5 | G3/8" |
| 423000  | 10A 6.1 X053  | 6.1  | 49.4 | 101.8 | M20x1.5          | G1/2" | M16x1.5 | G3/8" |                   |   |         |       |