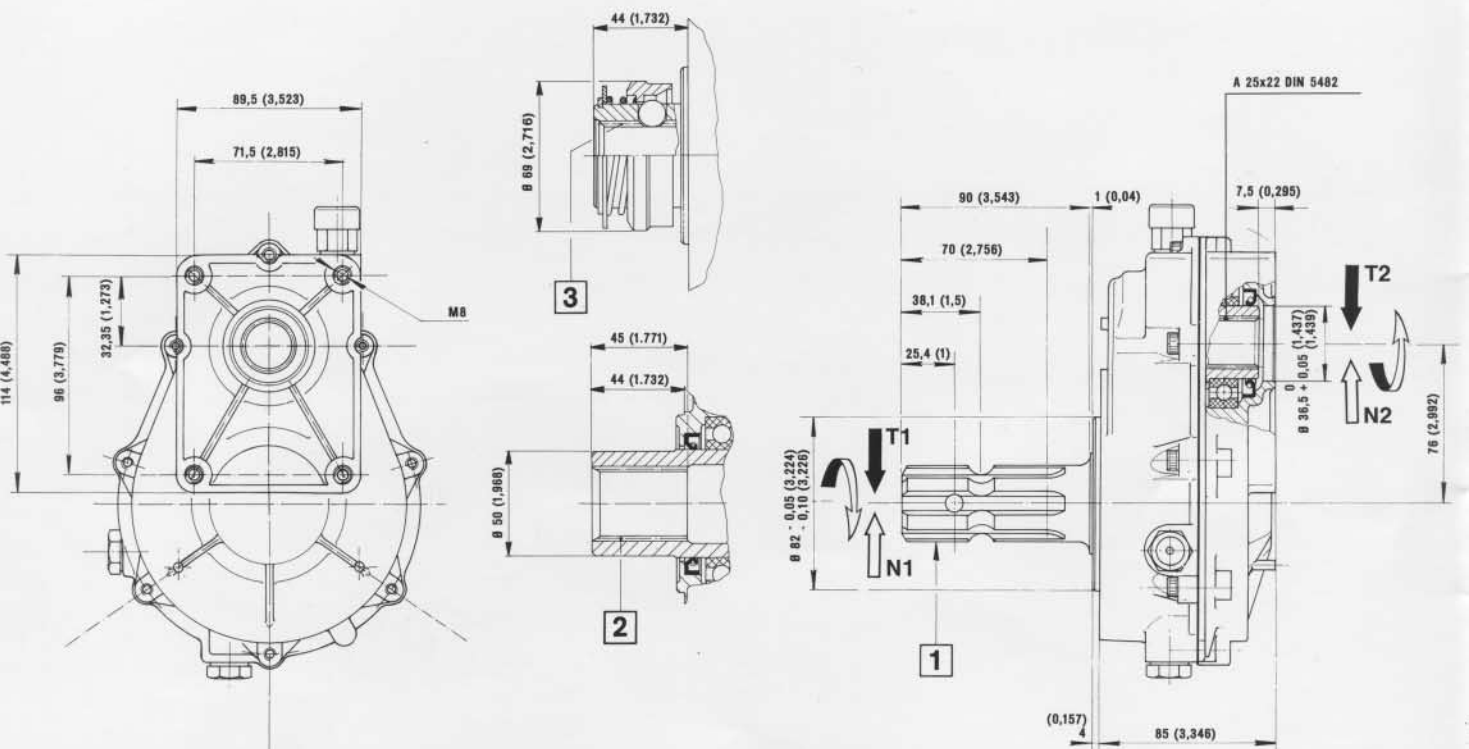
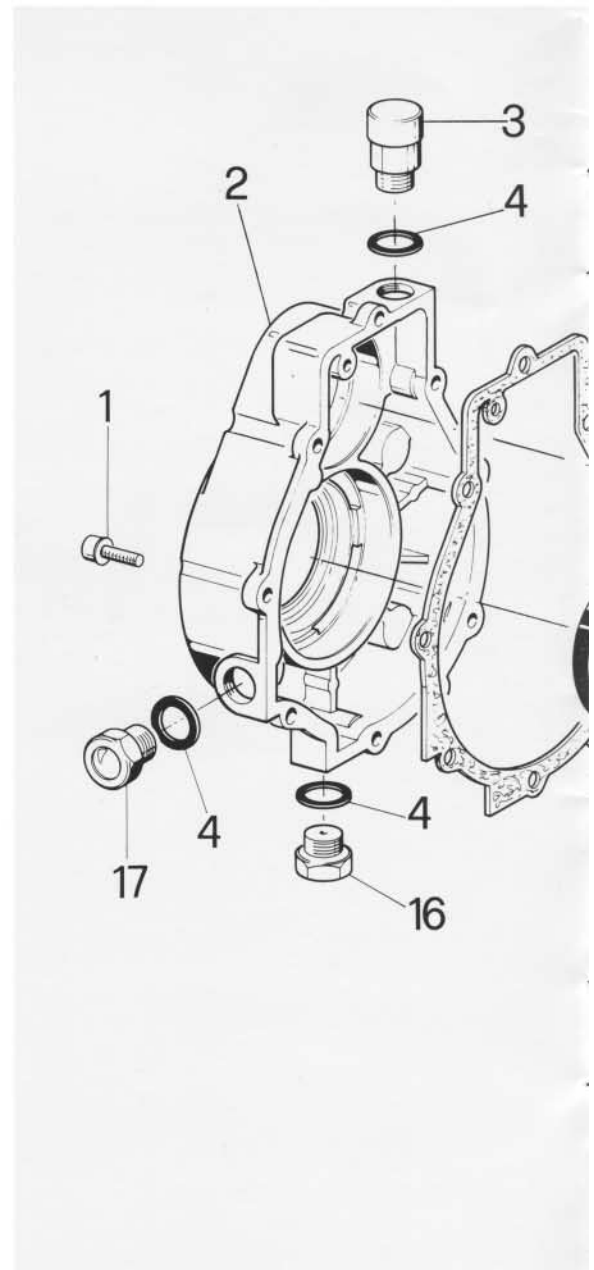
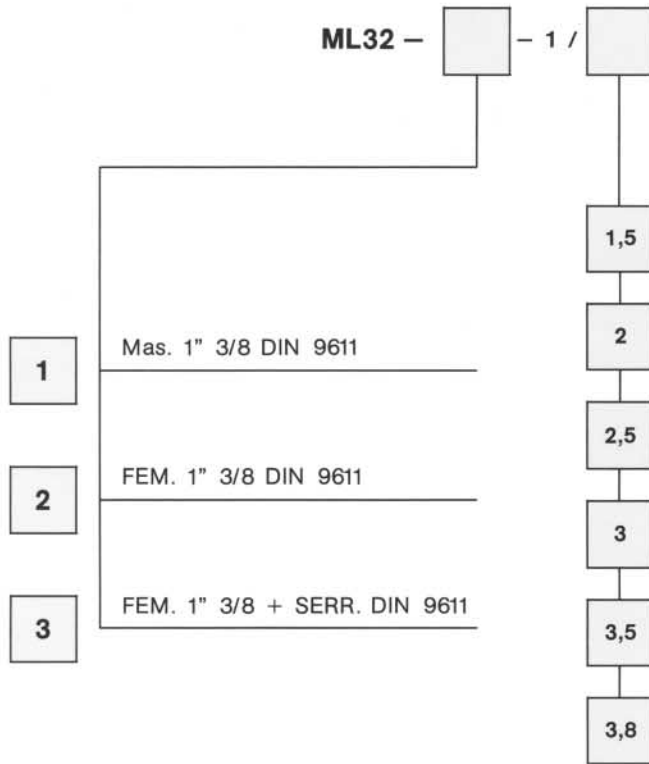


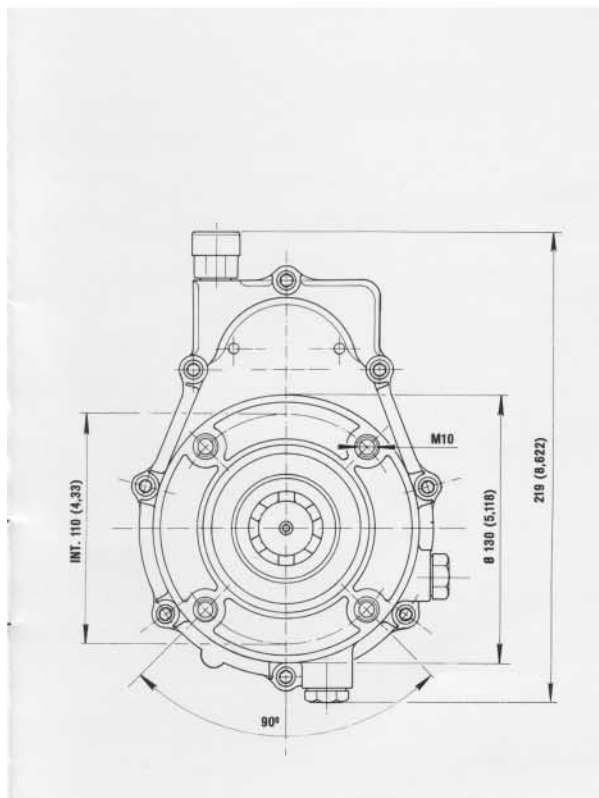
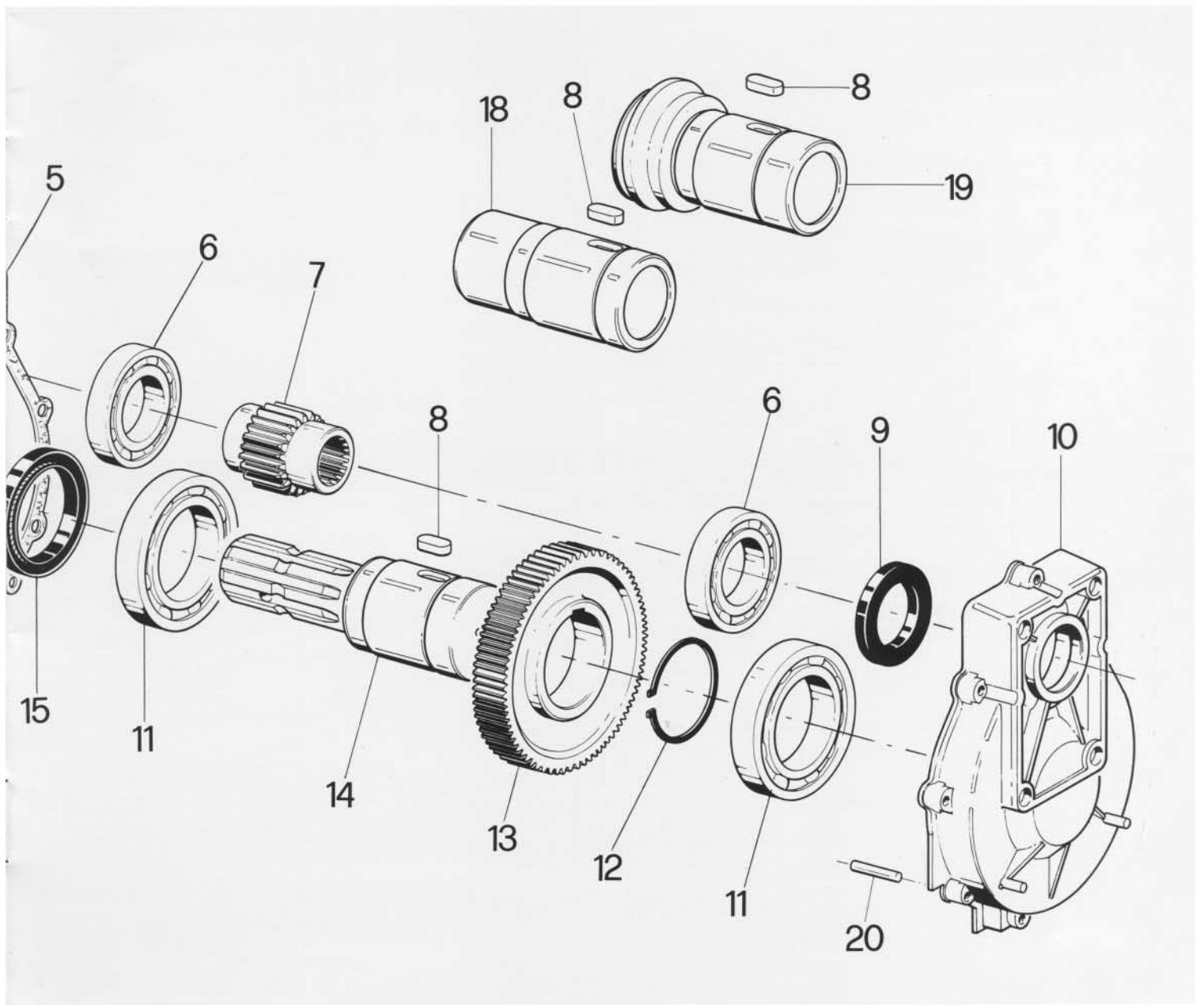
Getriebe - ML



ML32

CODICE D'ORDINAZIONE



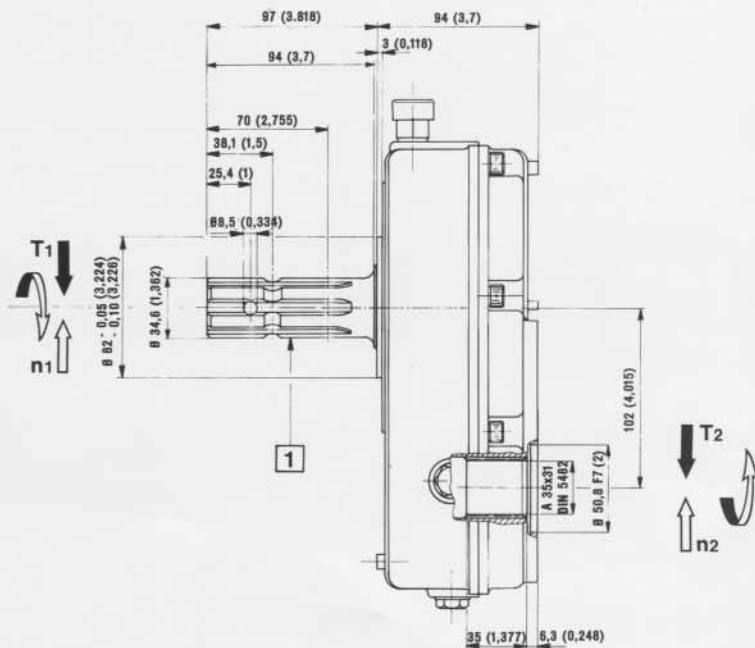
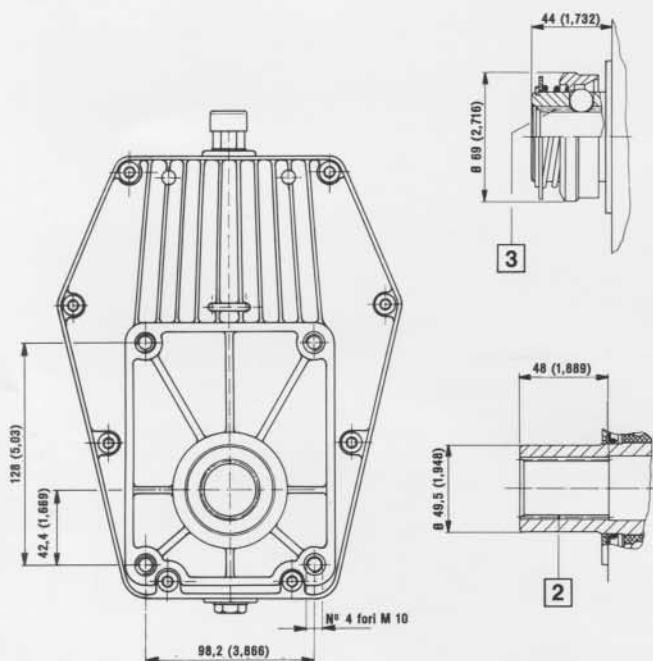
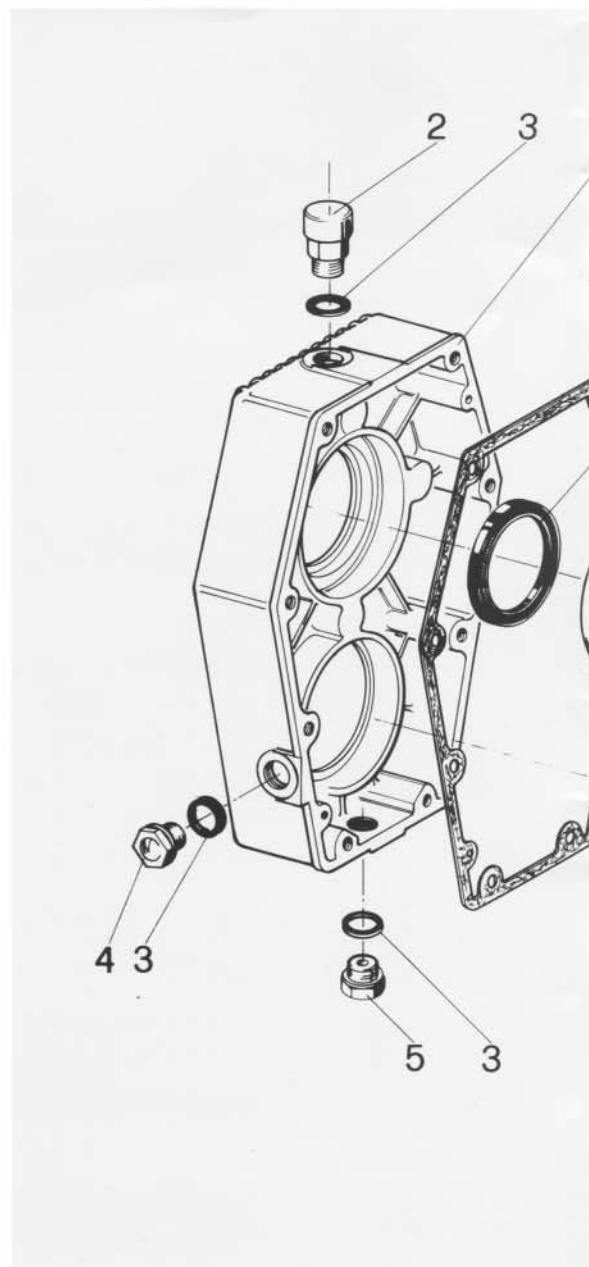
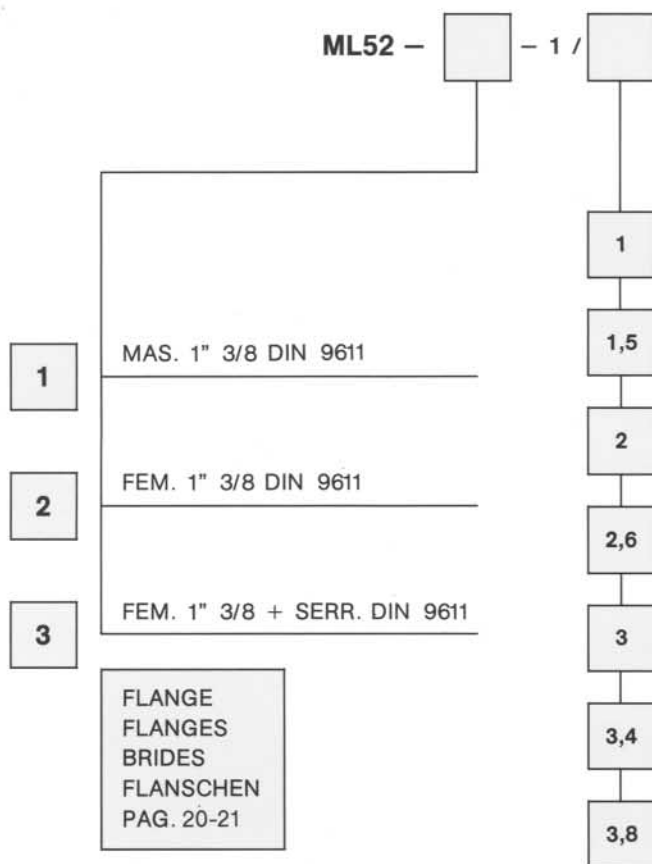


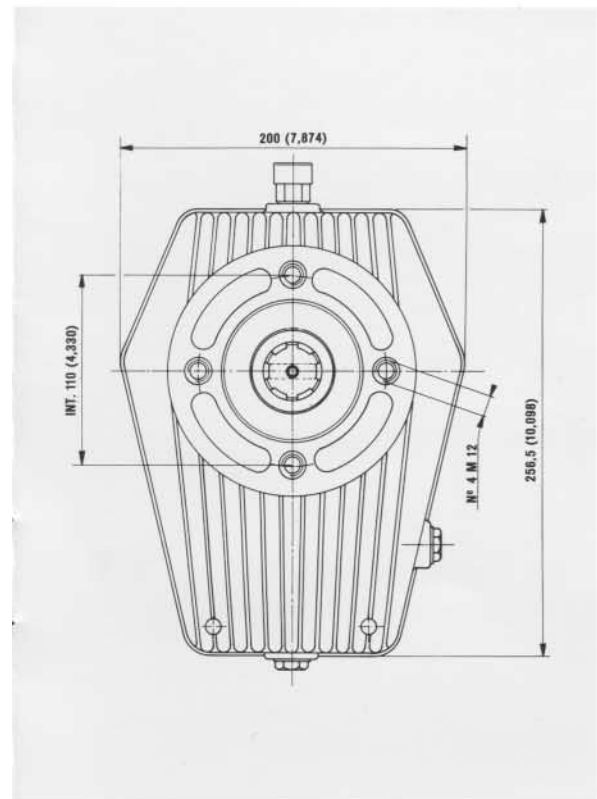
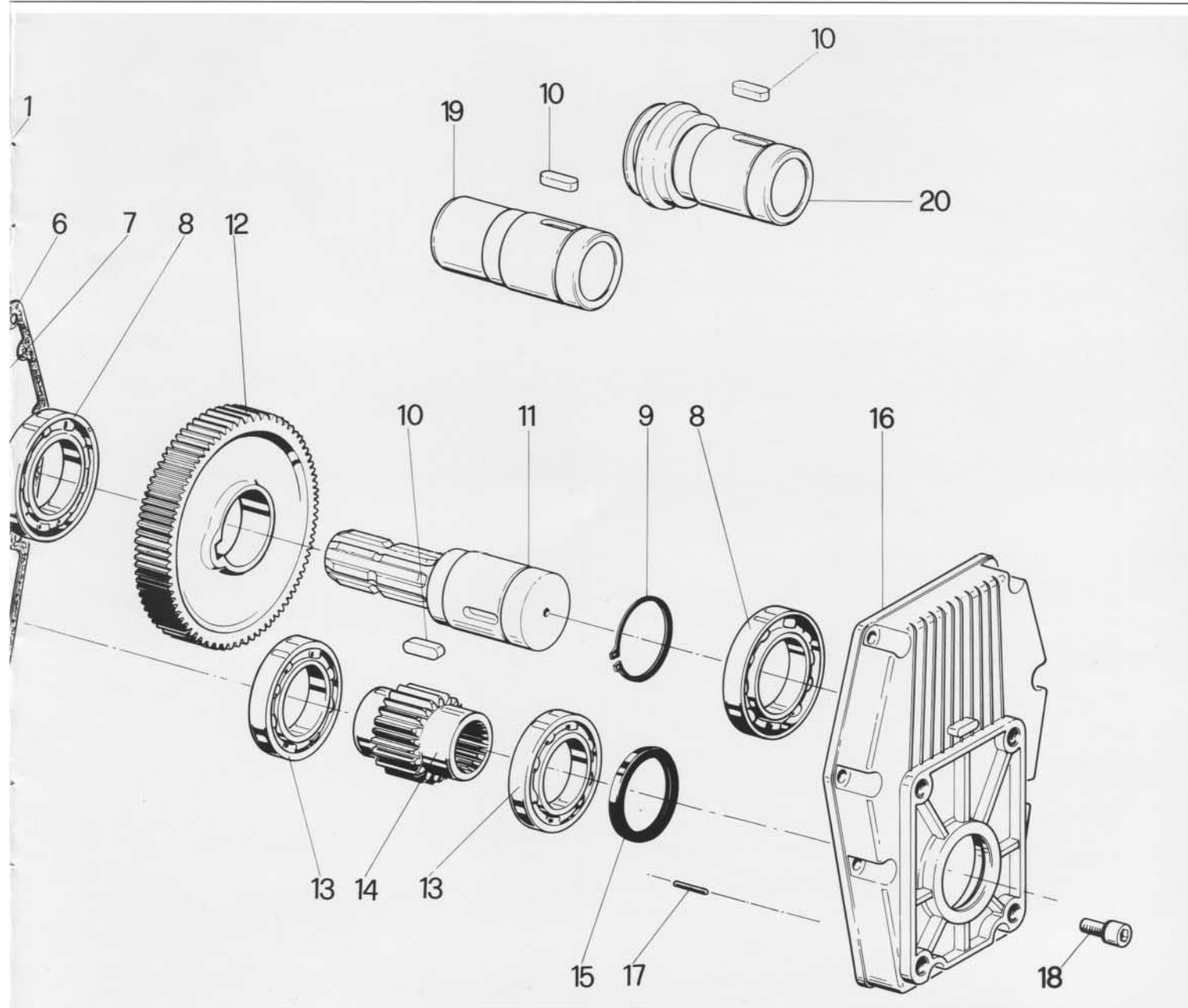
DATI CARATTERISTICI

n1	T1	n2	T2	R	PESO
GIRI/1	Nm	GIRI/1	Nm	n2/n1	KG
540	178	810	119	1,5	4 ÷ 4,3
	152	1080	76	2	
	165	1350	66	2,5	
	180	1680	58	3	
	186	1836	55	3,5	
159	2052	42	3,8		

ML52

CODICE D'ORDINAZIONE





DATI CARATTERISTICI RIDUTTORI

n1	T1	n2	T2	R	PESO
GIRI/1	Nm	GIRI/1	Nm	n2/n1	KG
540	317	540	317	1	7,5
	384	810	256	1,5	
	434	1080	217	2	
	463	1408	178	2,6	÷
	483	1620	161	3	7,8
	452	1836	133	3,4	
	437	2057	115	3,8	

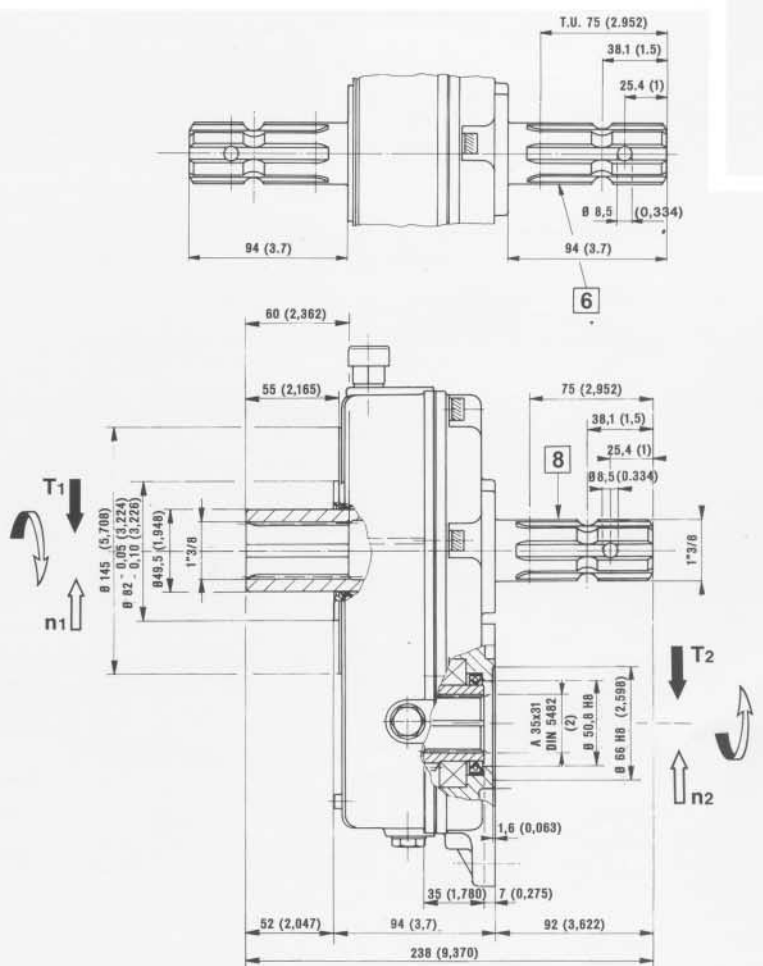
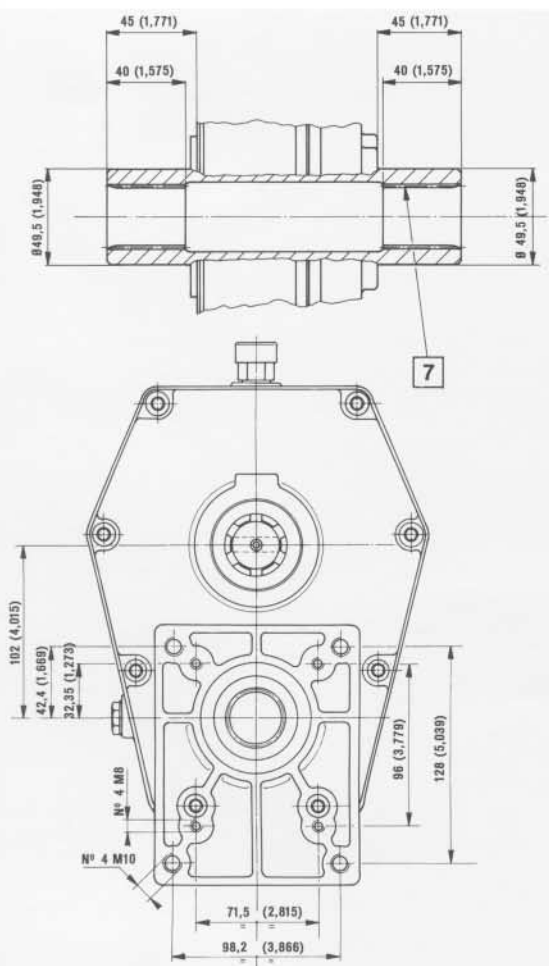
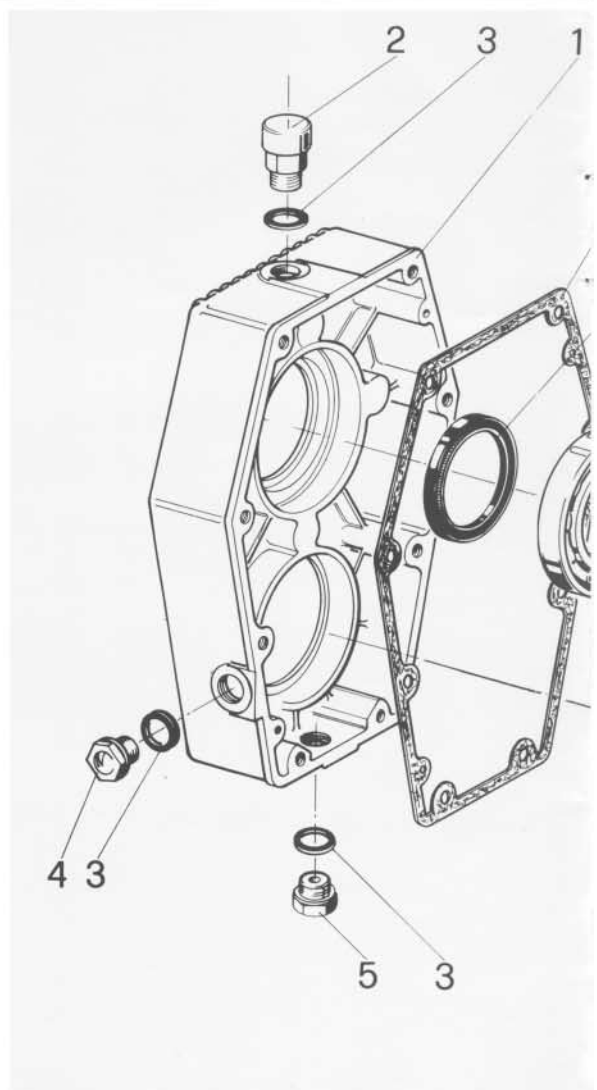
ML52/B

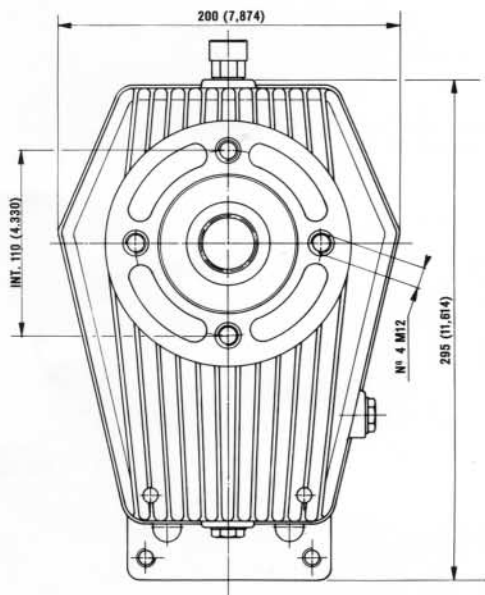
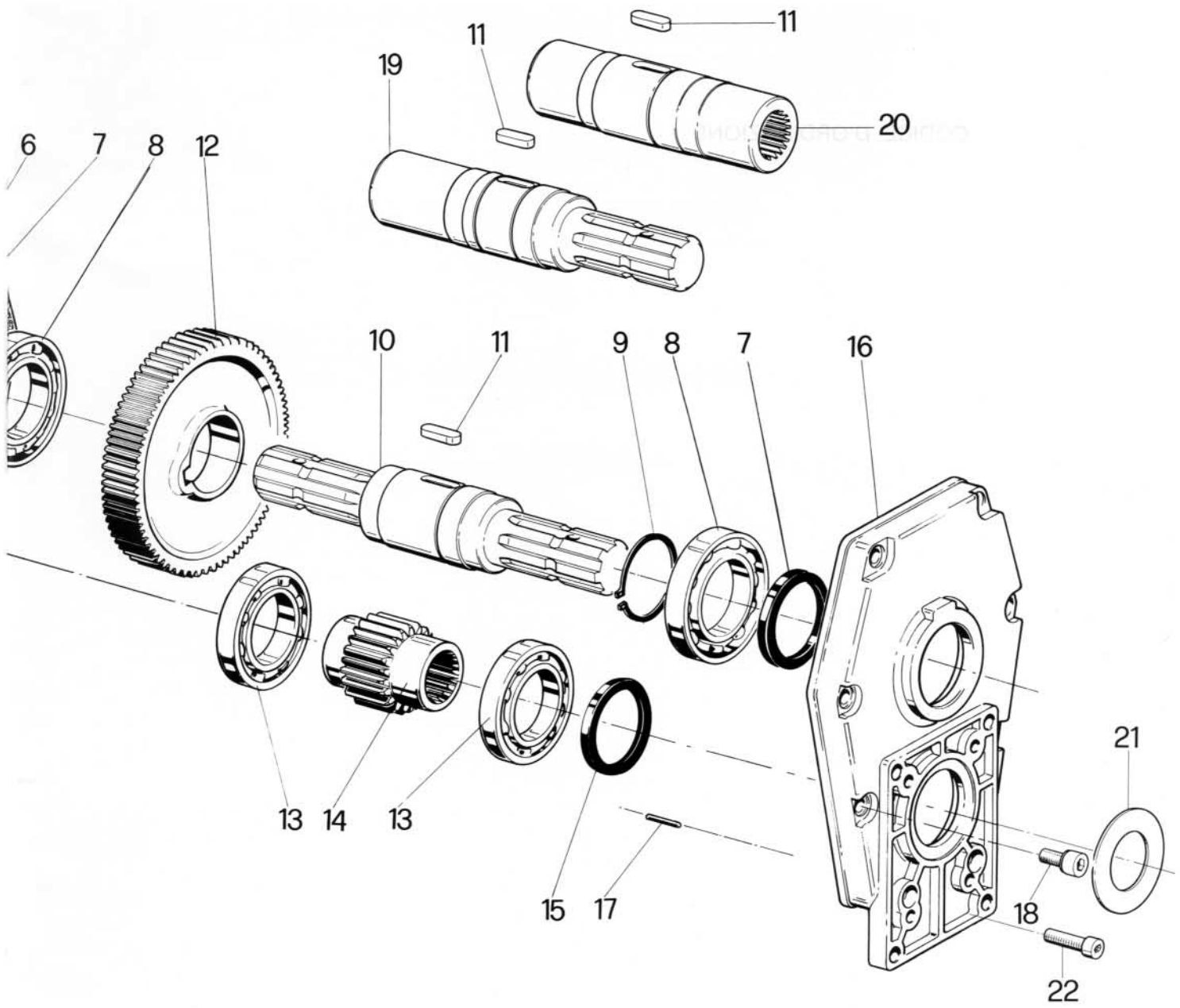
CODICE D'ORDINAZIONE

ML52/B - - 1 /

6	MAS. MAS. 1" 3/8 DIN 9611
7	FEM. FEM. 1" 3/8 DIN 9611
8	FEM. MAS. 1" 3/8 DIN 9611

- 1
- 1,5
- 2
- 2,6
- 3
- 3,4
- 3,8



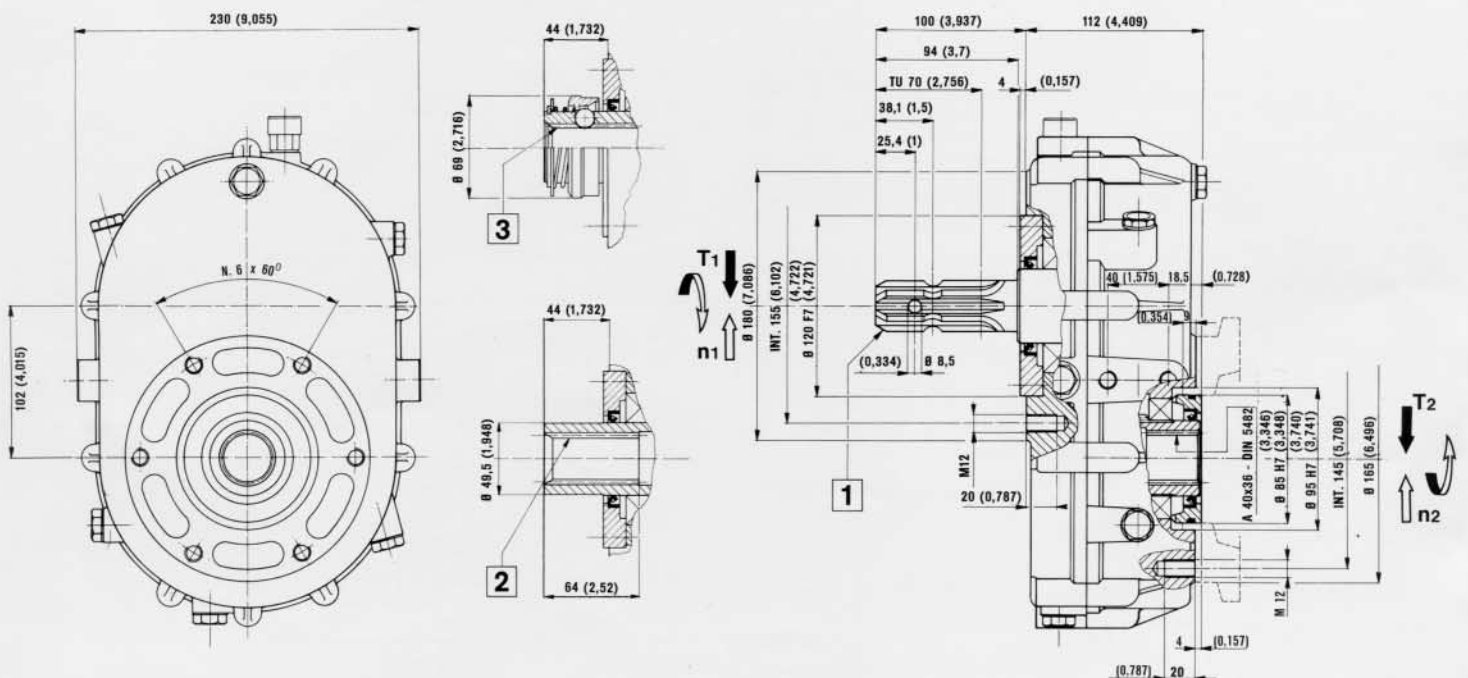
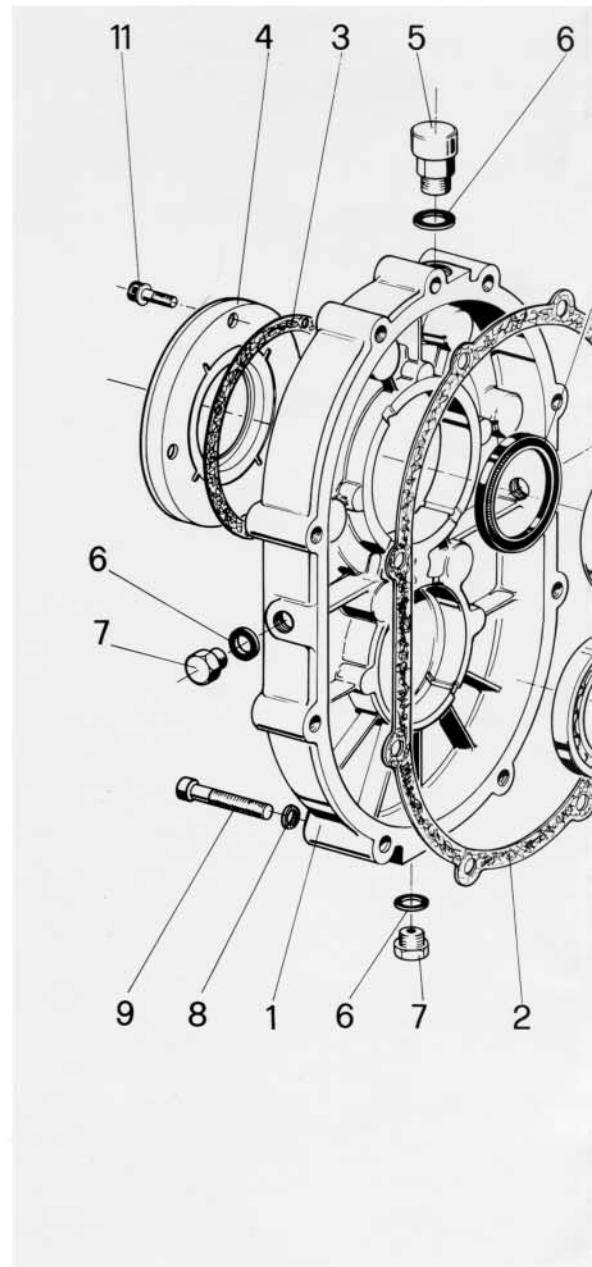
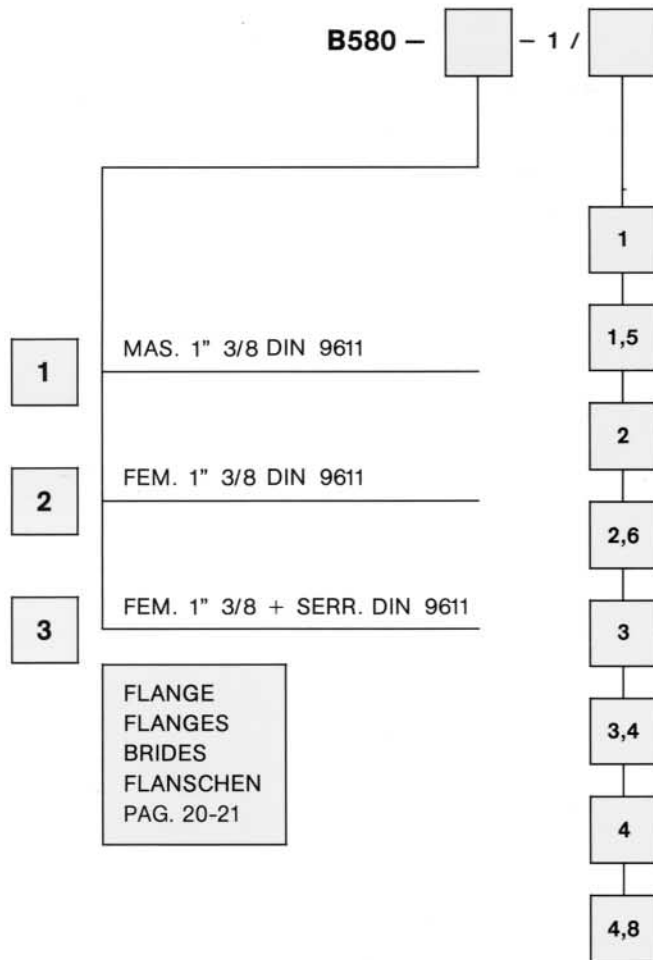


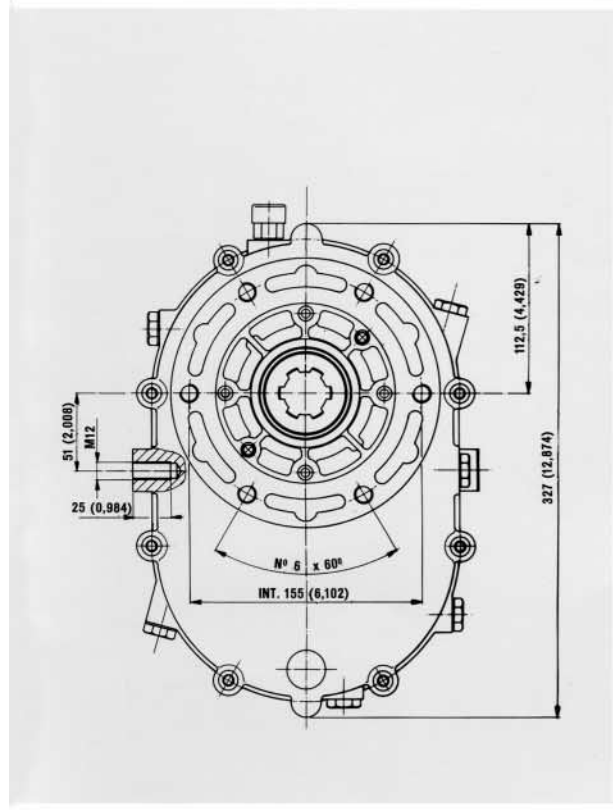
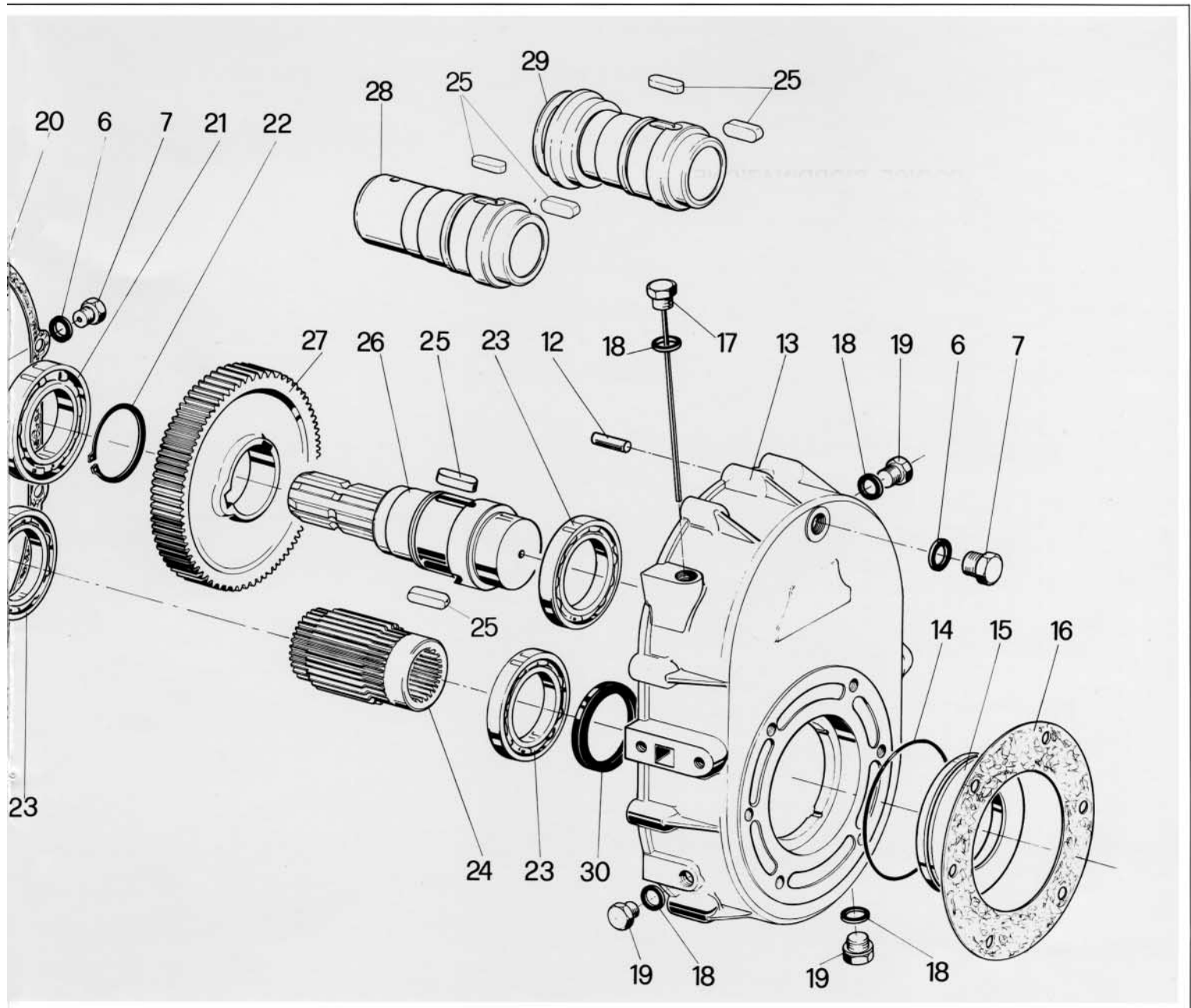
DATI CARATTERISTICI

n1	T1	n2	T2	R	PESO
GIRI/1	Nm	GIRI/1	Nm	n2/n1	KG
540	317	540	317	1	8,9
	384	810	256	1,5	
	434	1080	217	2	
	463	1408	178	2,6	9,5
	483	1620	161	3	
	452	1836	133	3,4	
	437	2057	115	3,8	

B580

CODICE D'ORDINAZIONE



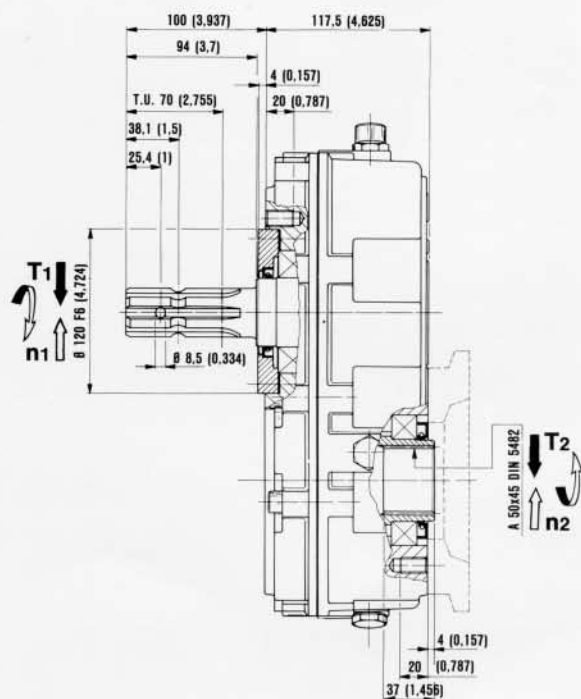
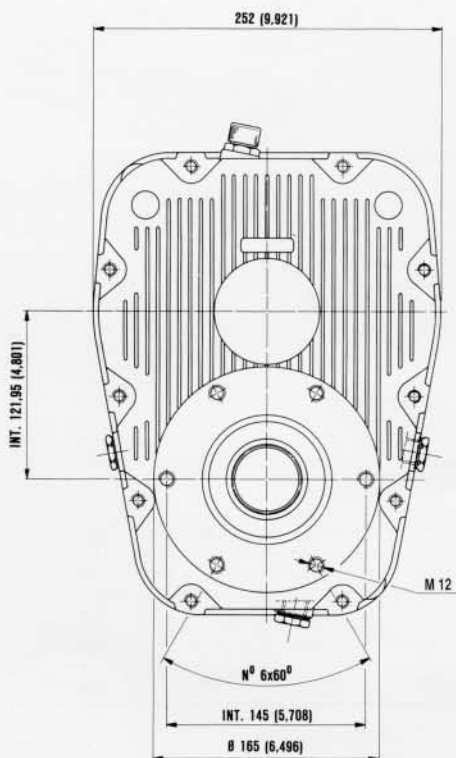
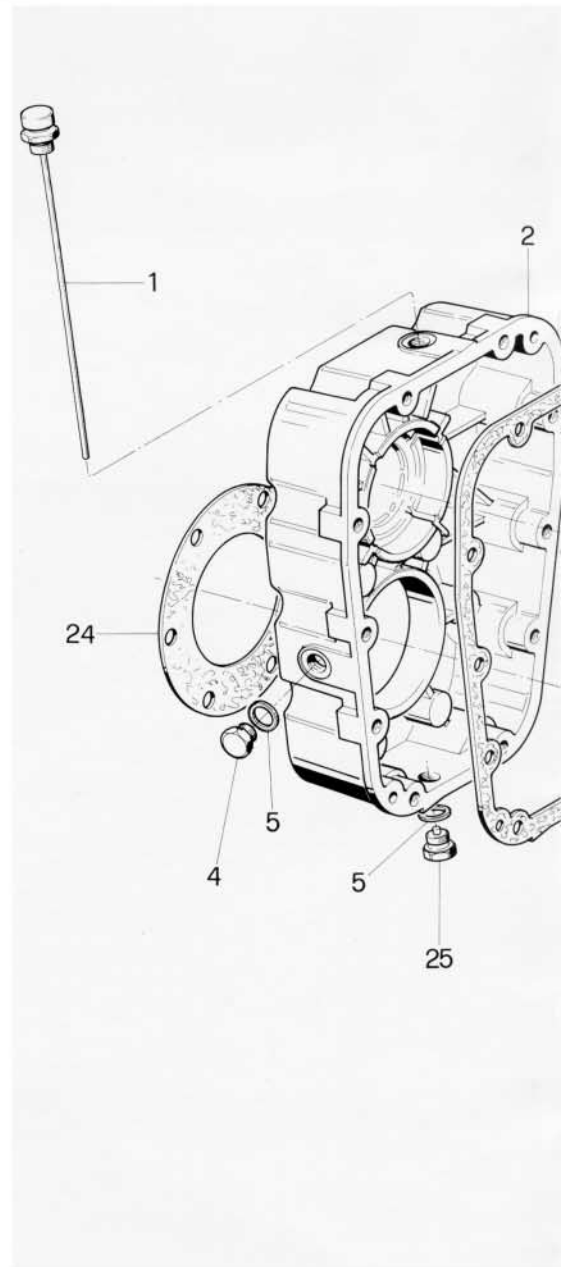
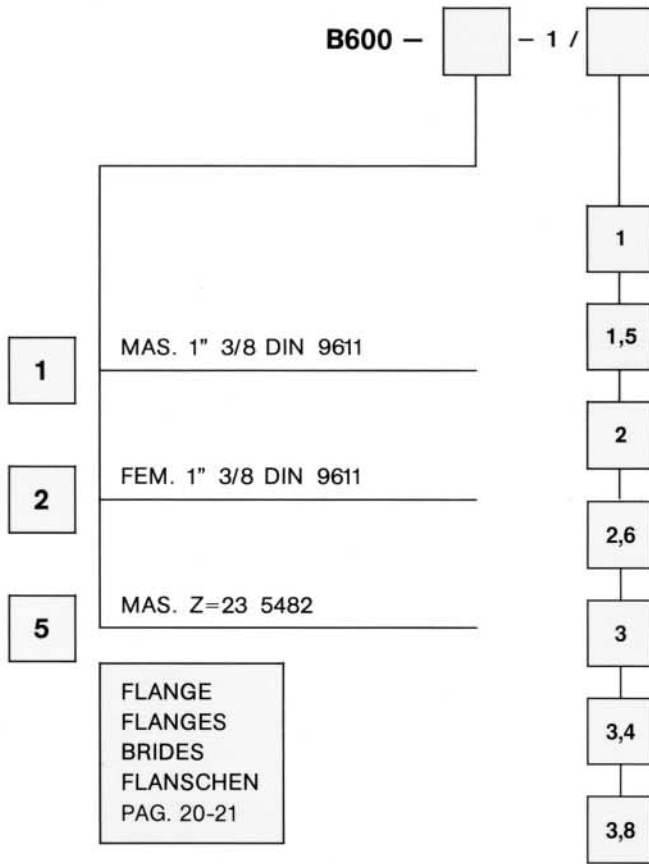


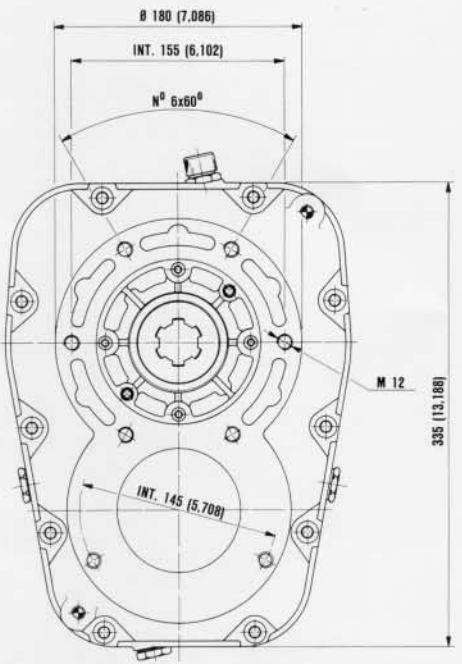
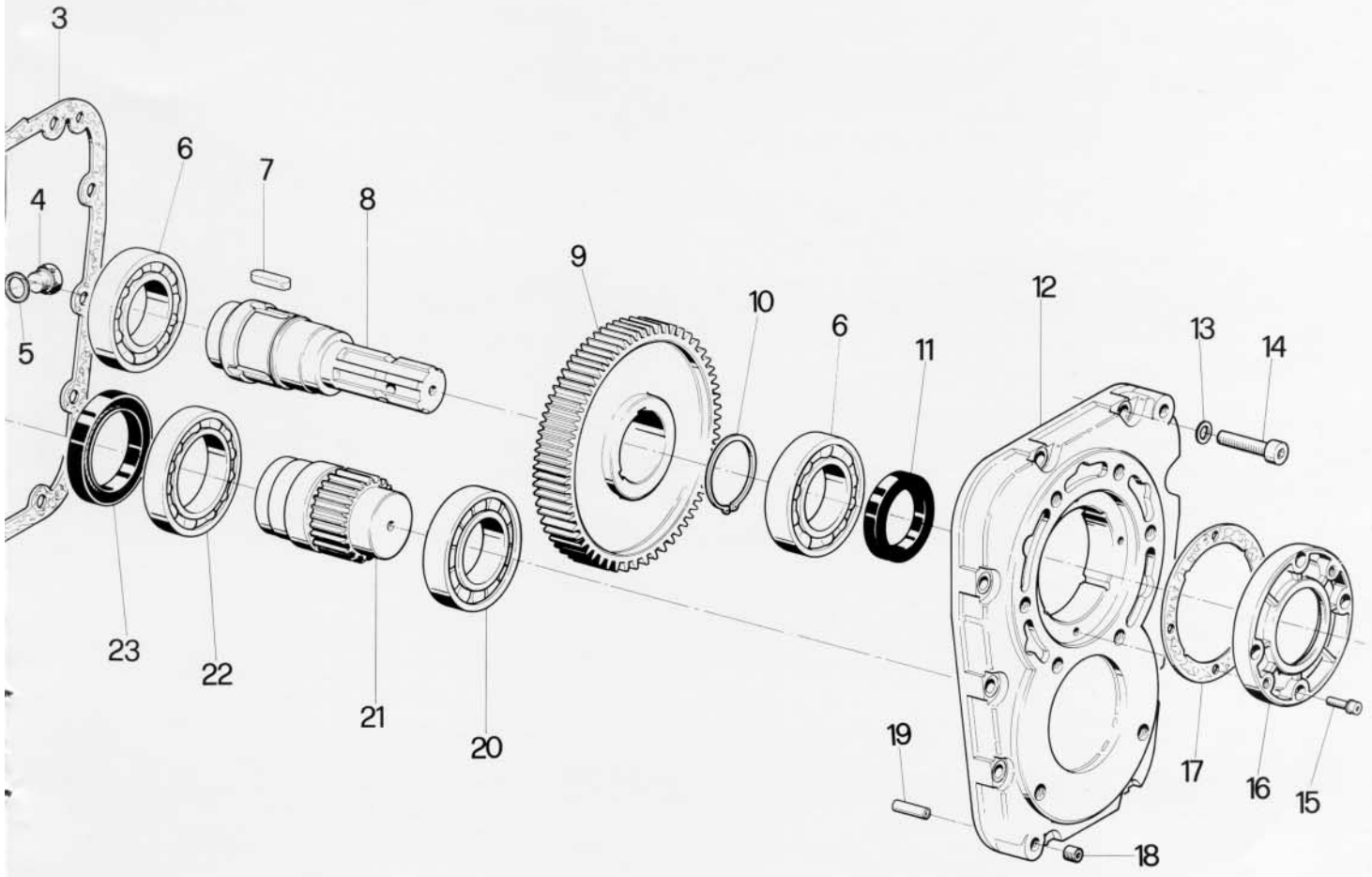
DATI CARATTERISTICI

n1	T1	n2	T2	R	PESO
GIRI/1			Nm	n2/n1	KG
540	466	540	466	1	10,8
	480	810	320	1,5	
	484	1080	242	2	
	468	1408	180	2,6	÷
	489	1620	163	3	
	459	1836	135	3,4	
	472	2160	118	4	
470	2592	98	4,8	13,9	

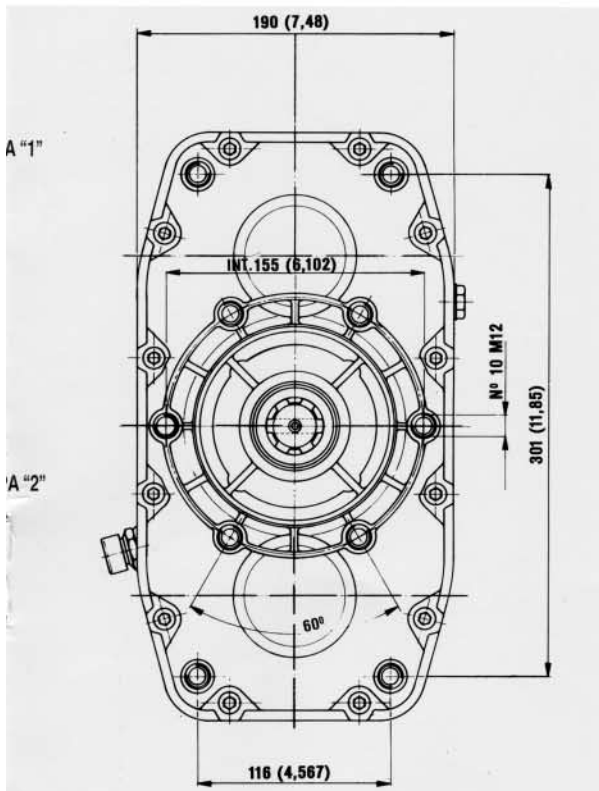
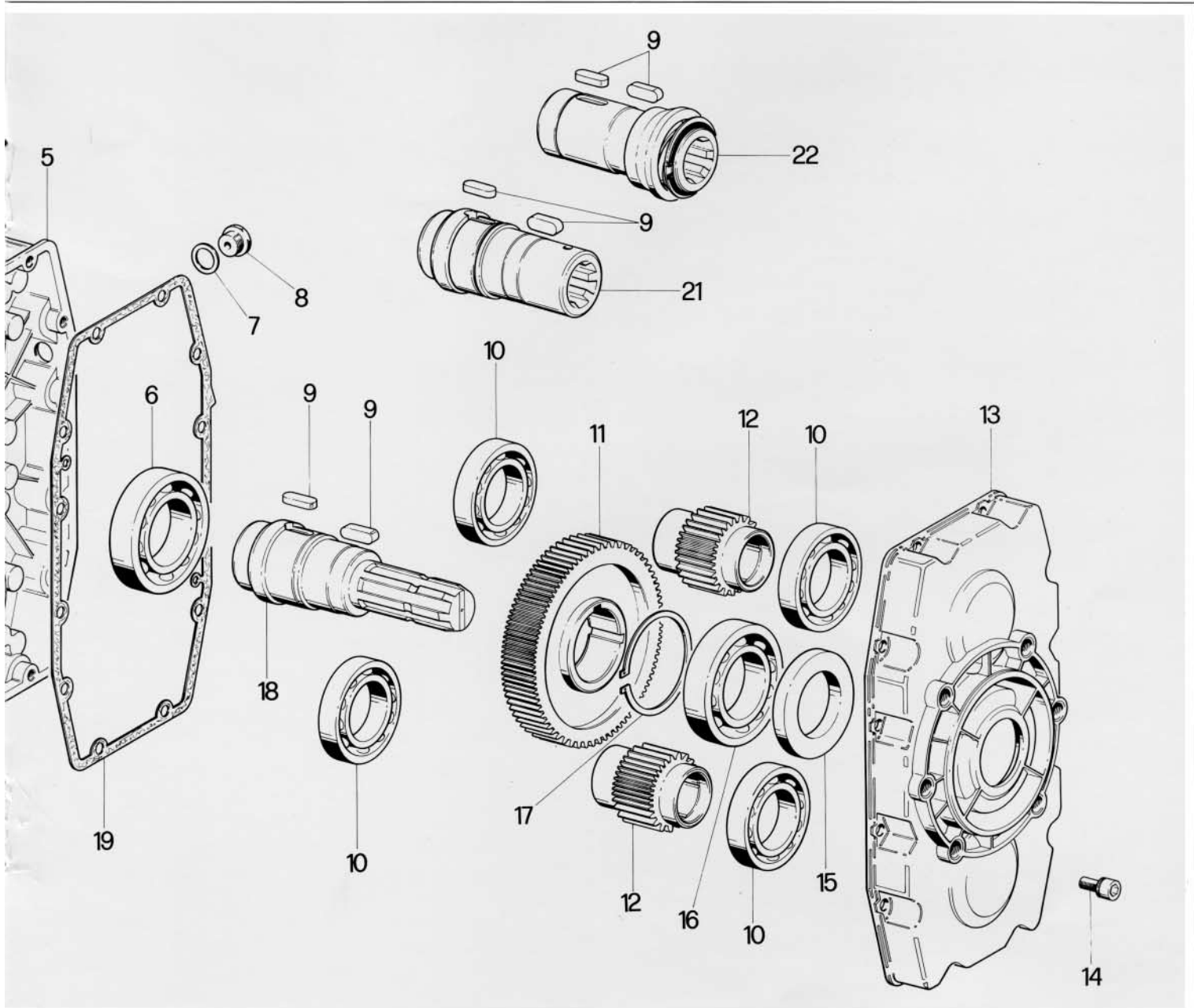
B600

CODICE D'ORDINAZIONE



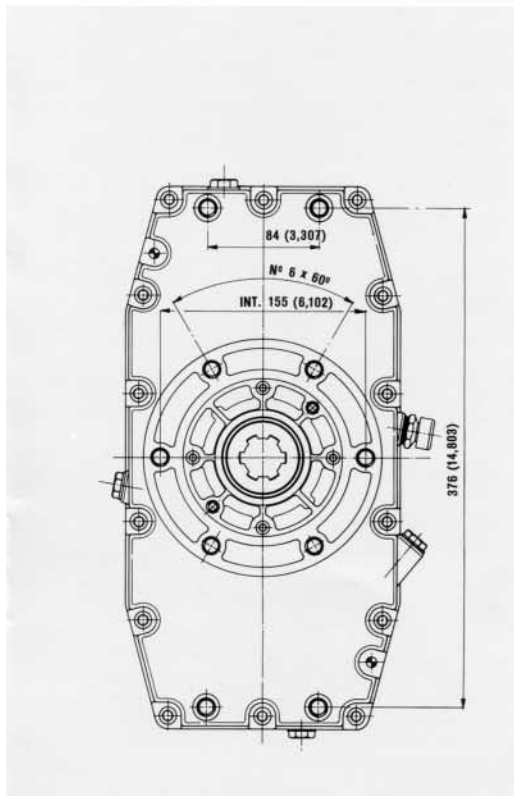
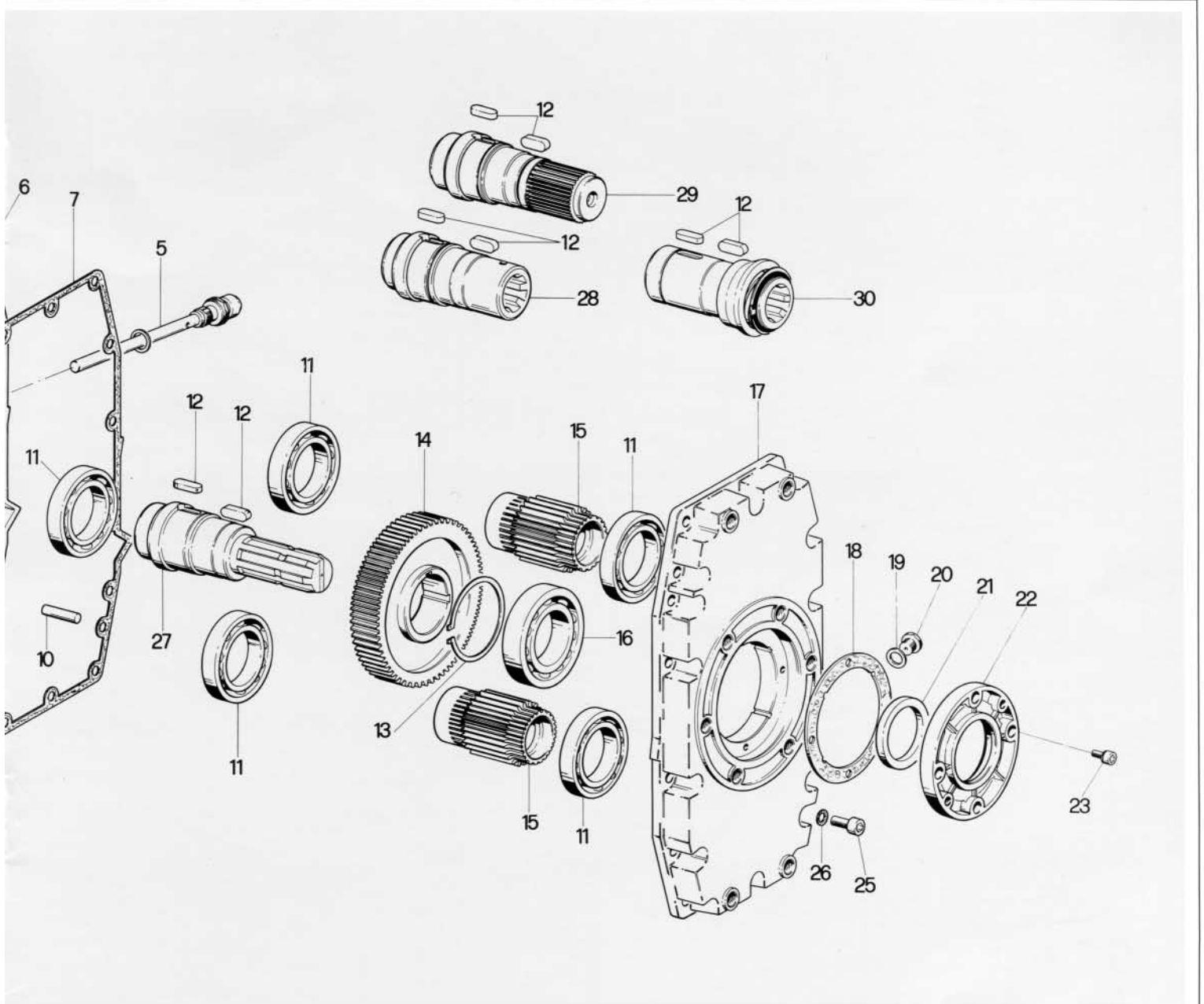


n1	T1	n2	T2	R	PESO
GIRI/1	Nm	GIRI/1	Nm	n2/n1	KG
540	680	540	680	1	16,5
	810	810	540	1,5	
	824	1080	412	2	
	878	1400	338	2,6	17,2
	894	1620	298	3	
	860	1810	253	3,4	
	798	2030	210	3,8	



DATI CARATTERISTICI

n1	T1	n2	T2	R	PESO
GIRI/1	Nm	GIRI/1	Nm	n2/n1	KG
540	634	540	317	1	9,9
	768	810	256	1,5	
	868	1080	217	2	
	925	1408	178	2,6	12
	966	1620	161	3	
	904	1836	133	3,4	
	874	2160	115	3,8	

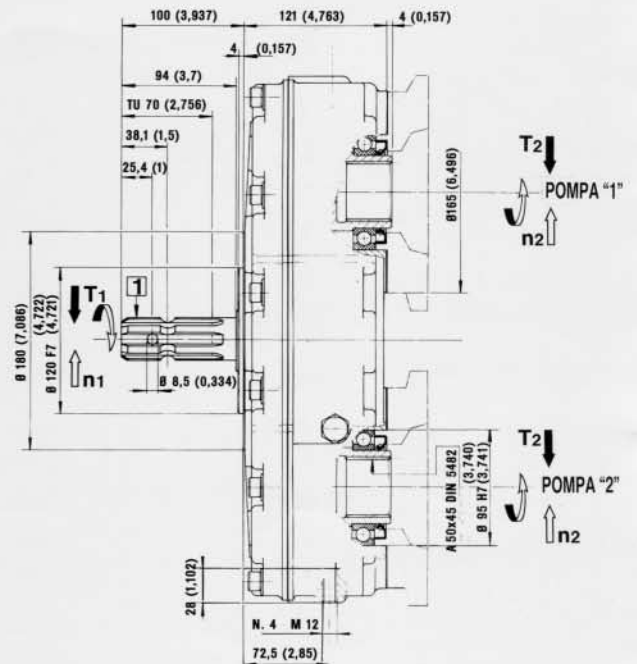
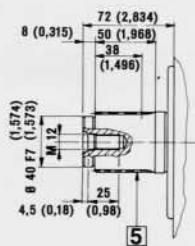
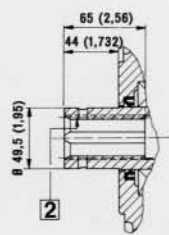
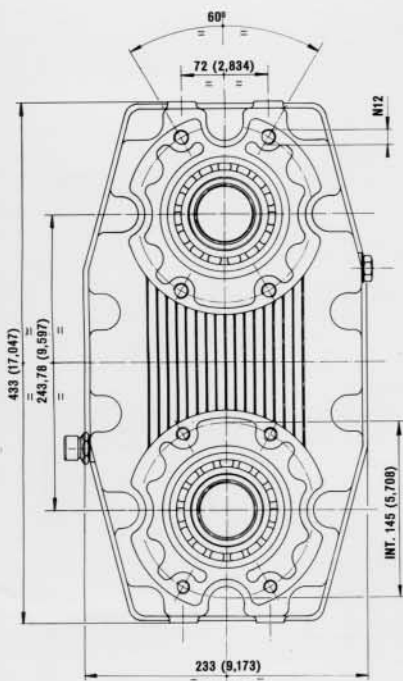
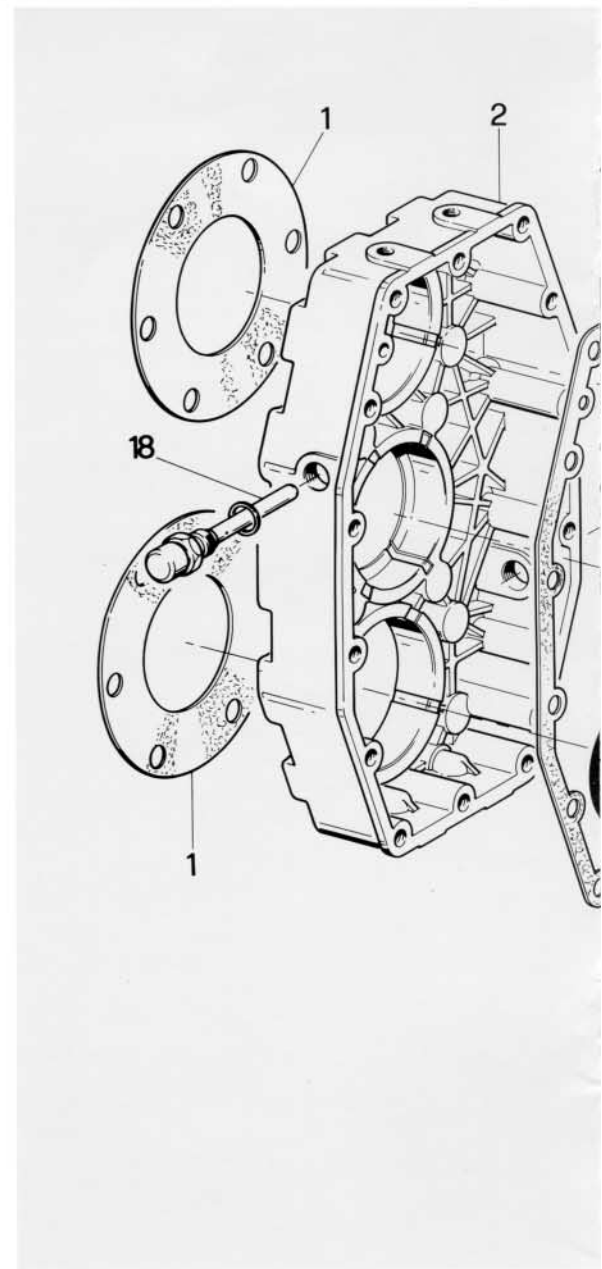
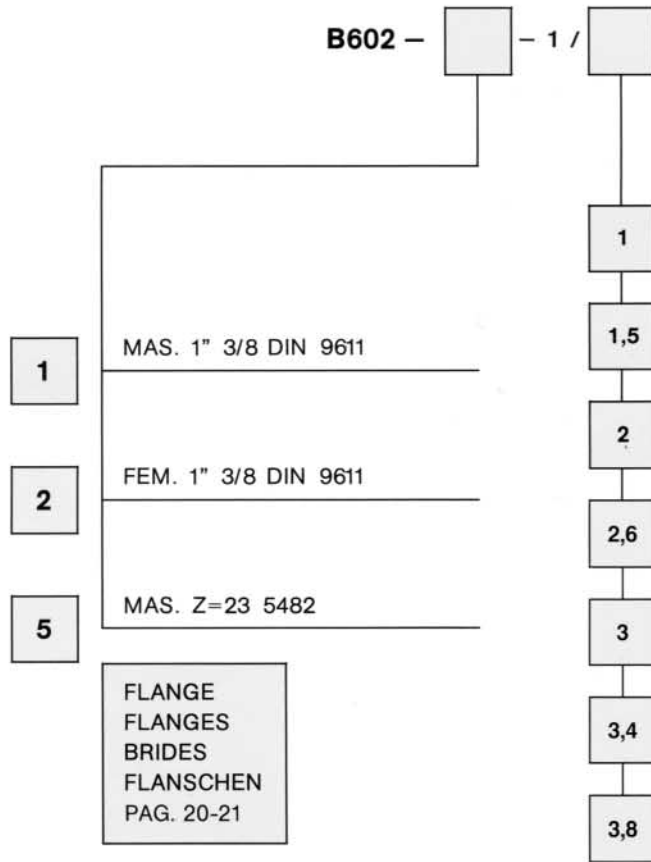


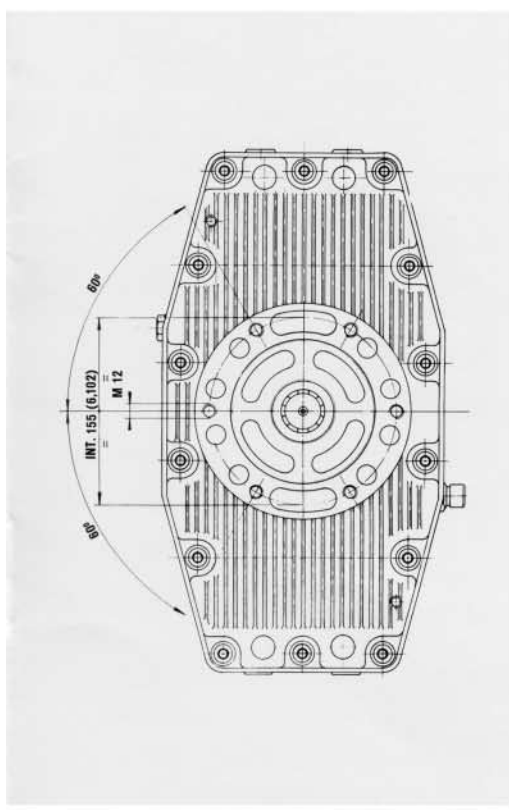
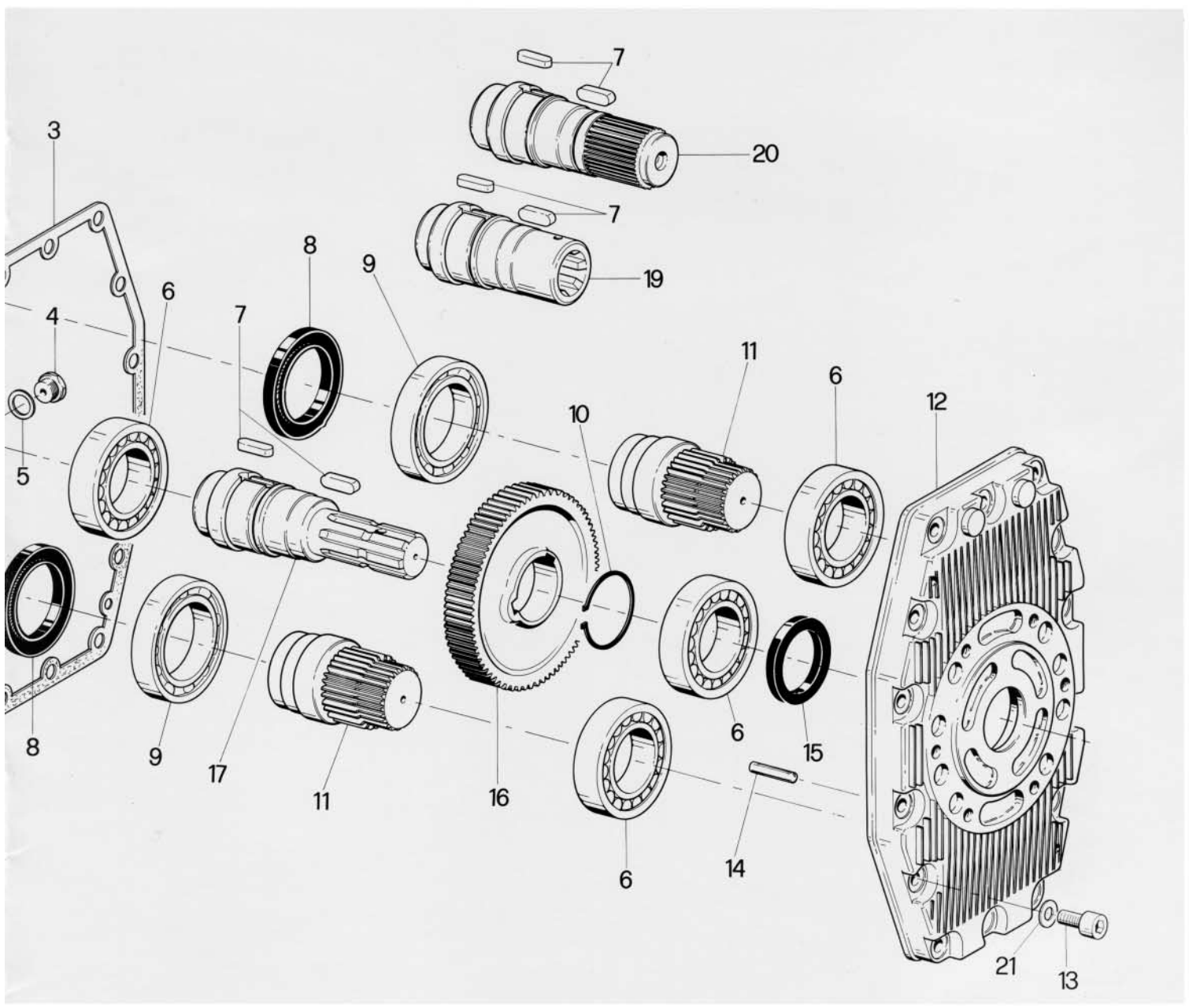
DATI CARATTERISTICI

n1	T1	n2	T2	R	PESO
GIRI/1	Nm	GIRI/1	Nm	n2/n1	KG
540	932	540	466	1	16,5
	960	810	320	1,5	
	968	1080	242	2	
	936	1408	180	2,6	÷
	978	1620	163	3	
	918	1836	135	3,4	
	944	2160	118	4	
940	2592	98	4,8	17,3	

B602

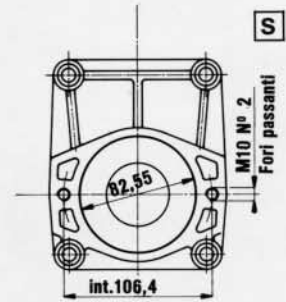
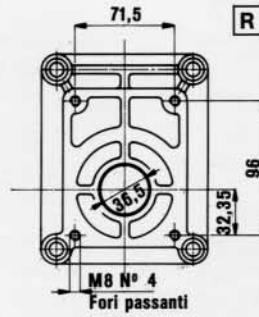
CODICE D'ORDINAZIONE



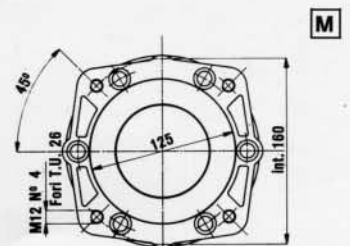
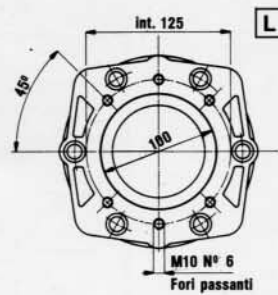
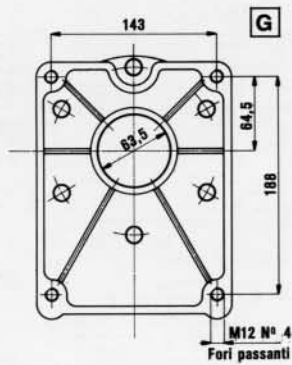
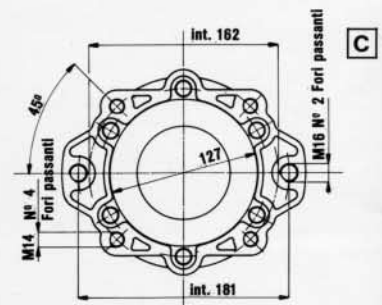
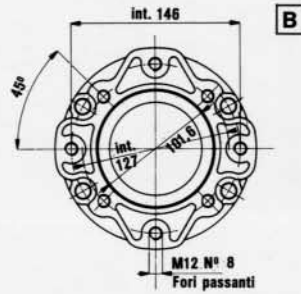
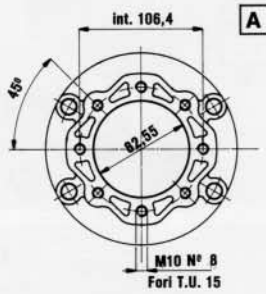


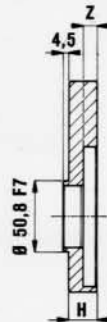
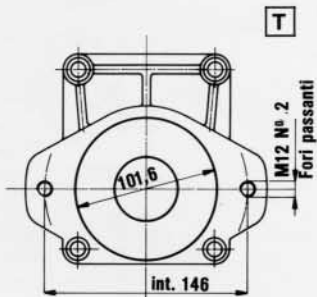
n1	T1	n2	T2	R	PESO
GIRI/1	Nm	GIRI/1	Nm	n2/n1	KG
540	1360	540	680	1	19,7
	1620	810	540	1,5	
	1648	1080	412	2	
	1756	1400	338	2,6	23,7
	1788	1620	298	3	
	1720	1810	253	3,4	
	1596	2030	210	3,8	

FLANGIATURE ML52 - B502

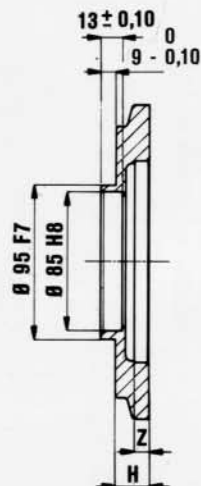
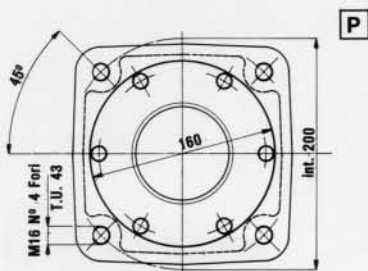
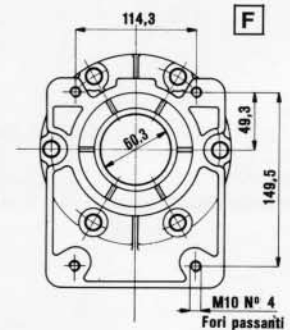
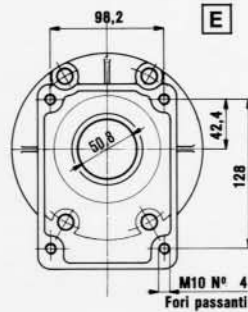
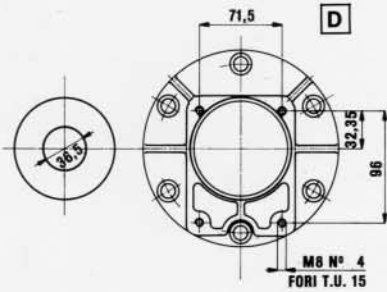


FLANGIATURE UNIVERSALI B580 - B600 - B582 - B602



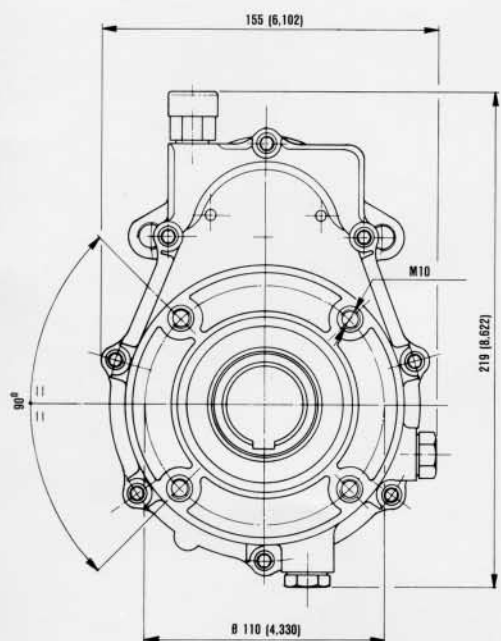
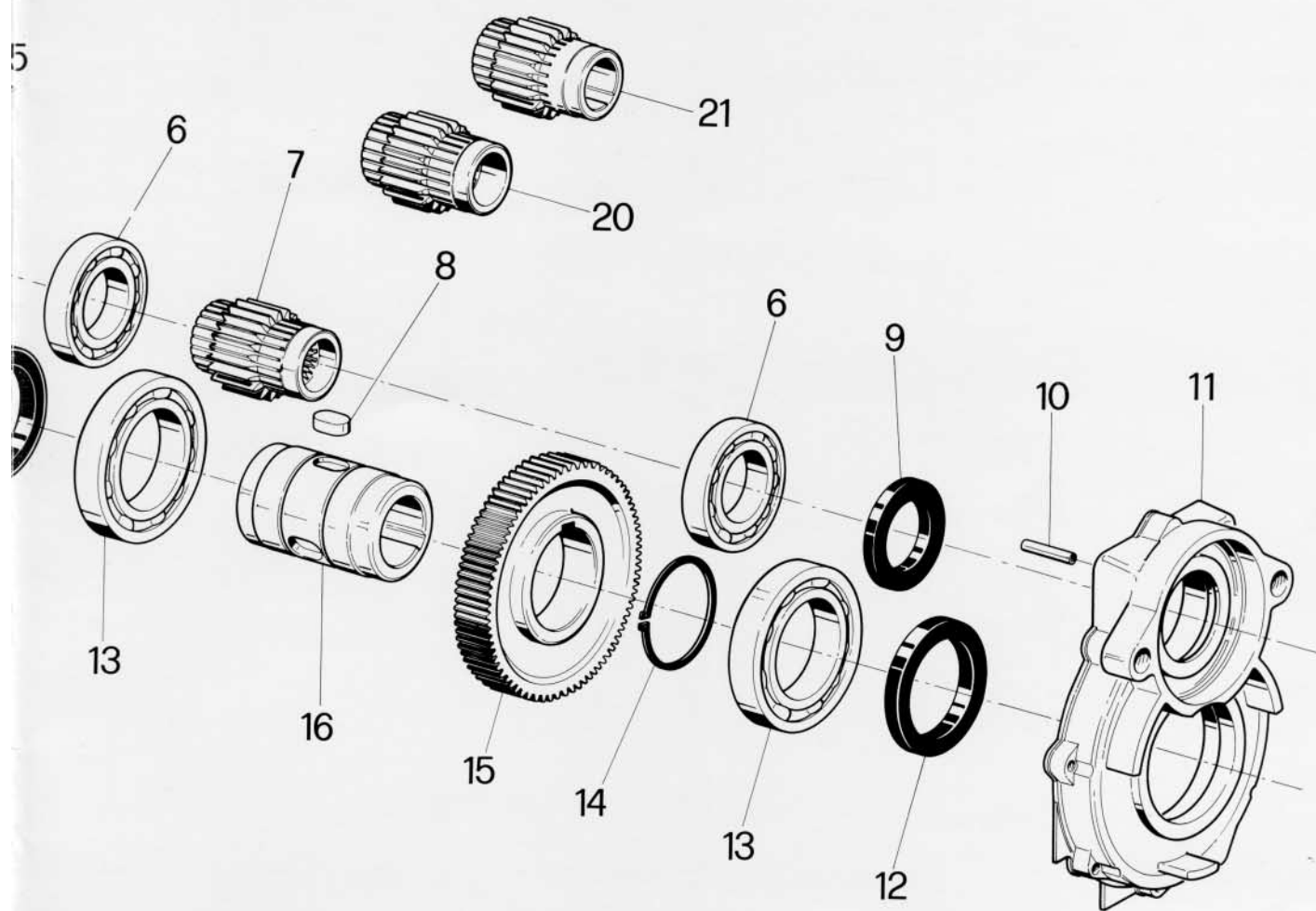


	TIPO DI POMPA PUMP TYPE TYPE DE POMPE PUMPENTYP	Z	H
R	GR. 2	10	15
S	SAE A	12	25
T	SAE B	12	25



	TIPO DI POMPA PUMP TYPE TYPE DE POMPE PUMPENTYP	Z	H
A	SAE A	25	25
B	SAE B	12	25
C	SAE C	15	28
D	GR. 2	21	21
E	GR. 3	22	22
F	GR. 3,5	24,5	24,5
G	GR. 4	36	36
L	ISO 1	20,5	26,5
M	ISO 2	33	43
P	ISO 3	57	72

5

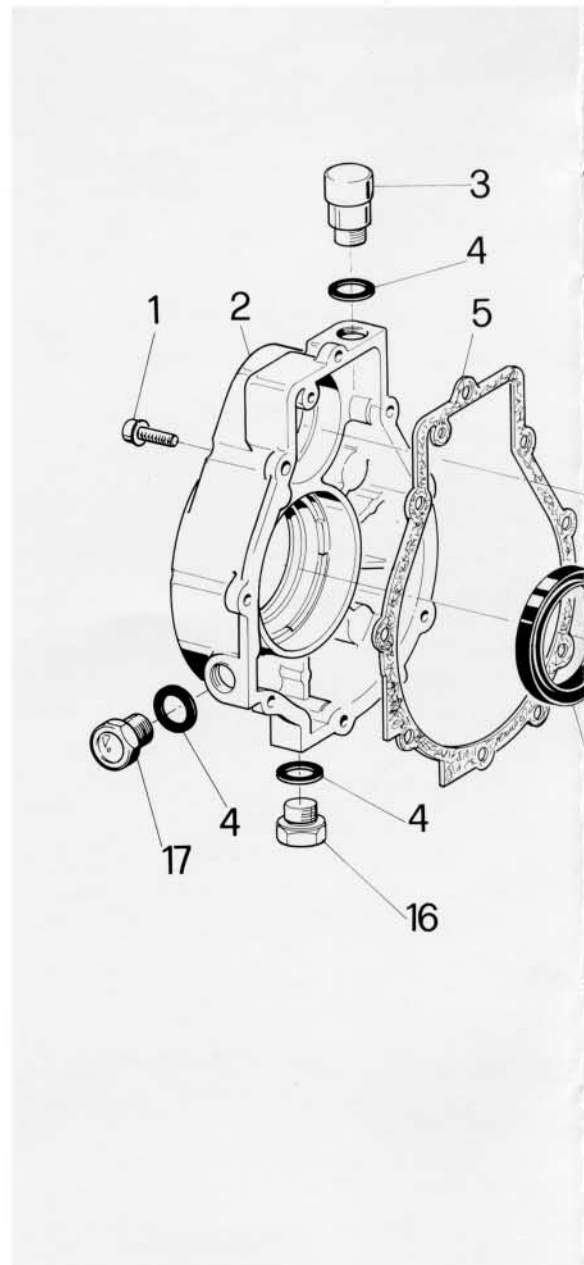
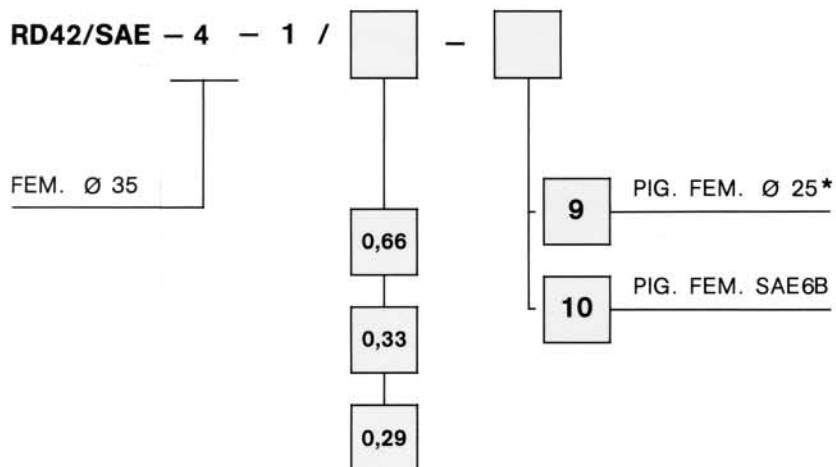


DATI CARATTERISTICI

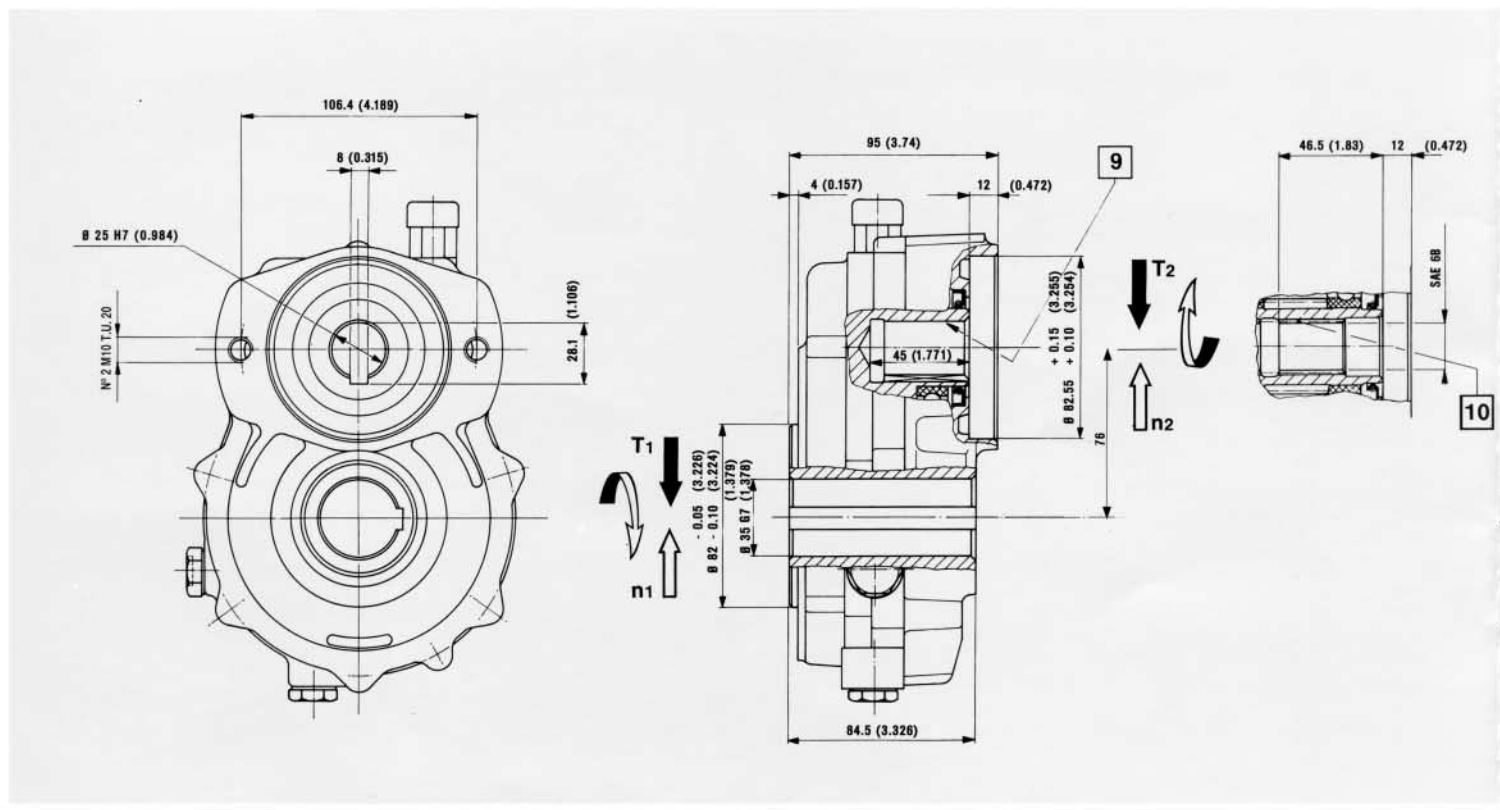
n1	T1	n2	T2	R	PESO
GIRI/1	Nm	GIRI/1	Nm	n1/n2	KG
200	196	300	131	0,66	4,1
	176	400	88	0,50	
	192	500	77	0,40	÷
	201	600	67	0,33	4,3
	214	700	63	0,29	
	186	760	49	0,26	

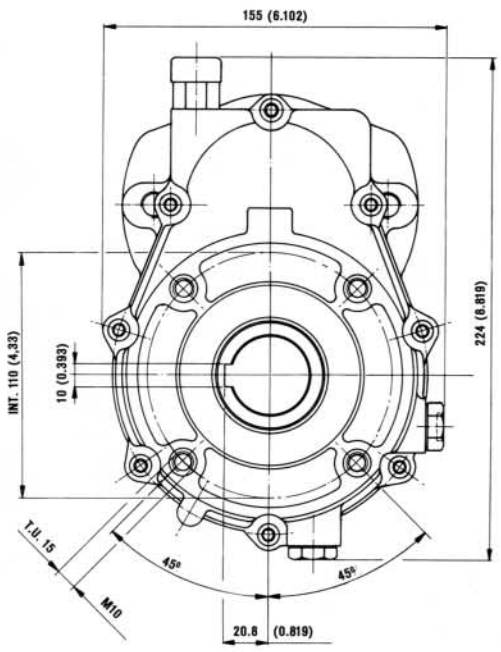
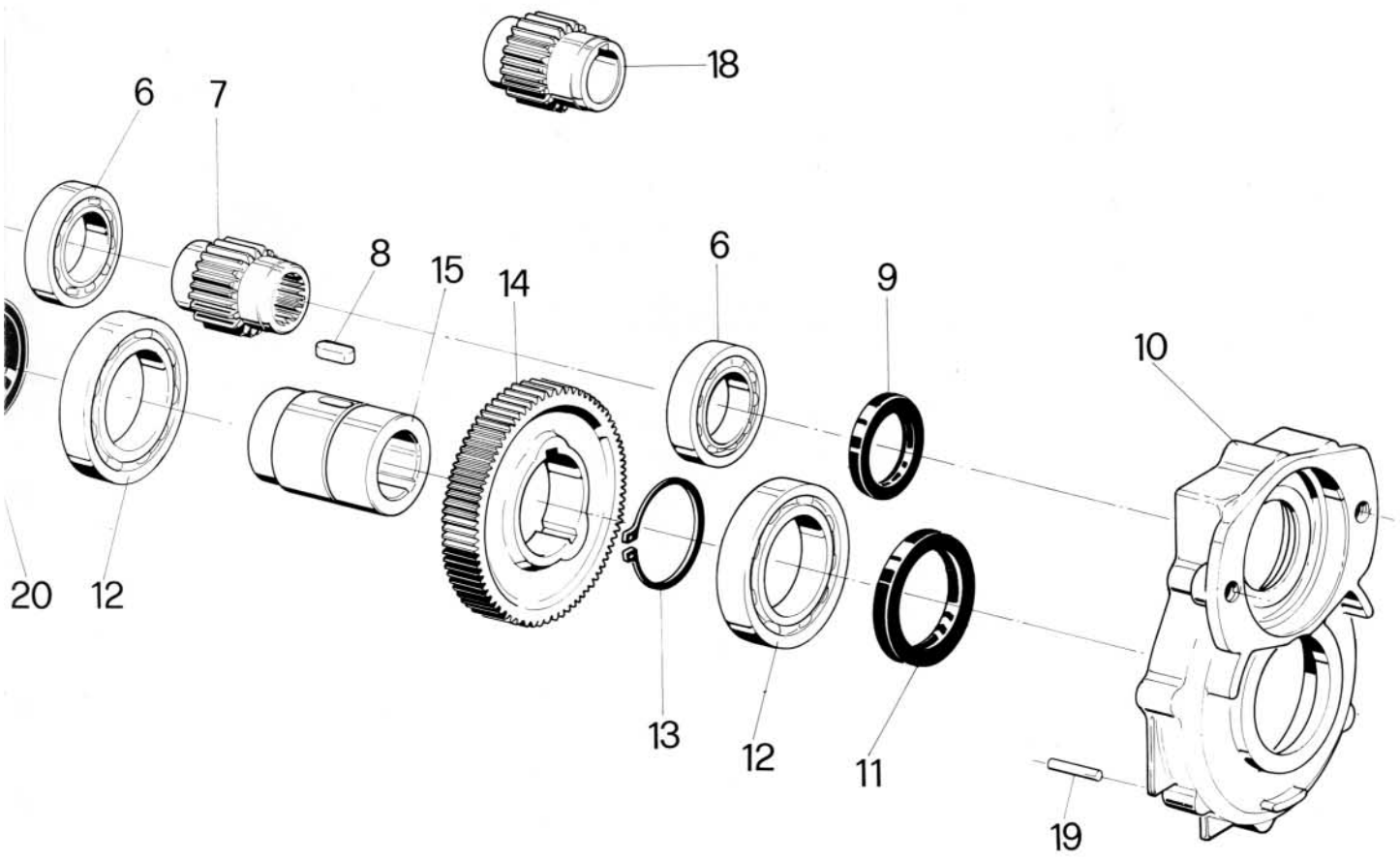
RD42/SAE

CODICE D'ORDINAZIONE



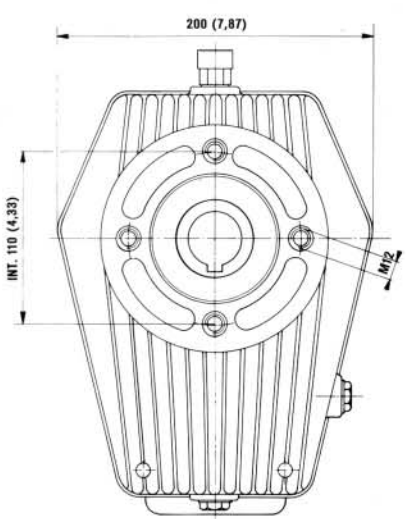
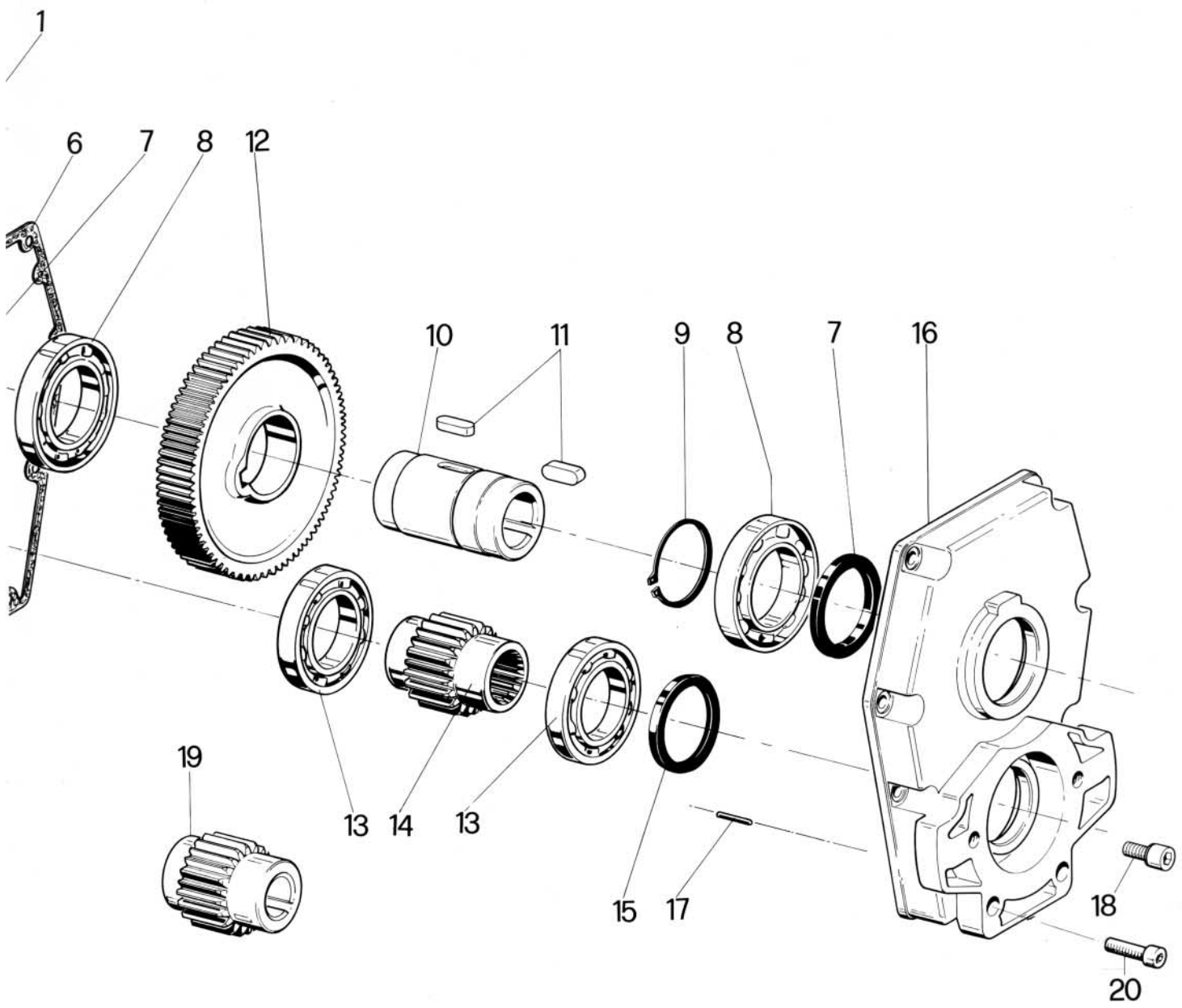
* Solo rapporti 0,66; 0,50; 0,40; 0,33
 Only for 0,66; 0,50; 0,40; 0,33
 Seulmant pour 0,66; 0,50; 0,40; 0,33
 Für Untersetzungen 0,66; 0,50; 0,40; 0,33





DATI CARATTERISTICI

n1	T1	n2	T2	R	PESO
GIRI/1	Nm	GIRI/1	Nm	n1/n2	KG
200	228	300	152	0,66	7,6
	225	600	75	0,33	÷
	245	700	70	0,29	8,1



DATI CARATTERISTICI

n1	T1	n2	T2	R	PESO
GIRI/1	Nm	GIRI/1	Nm	n1/n2	KG
200	480	300	320	0,66	7,3
	484	400	242	0,50	
	522	500	209	0,38	÷
	567	600	189	0,33	
	533	680	157	0,29	
	524	760	138	0,26	8,4